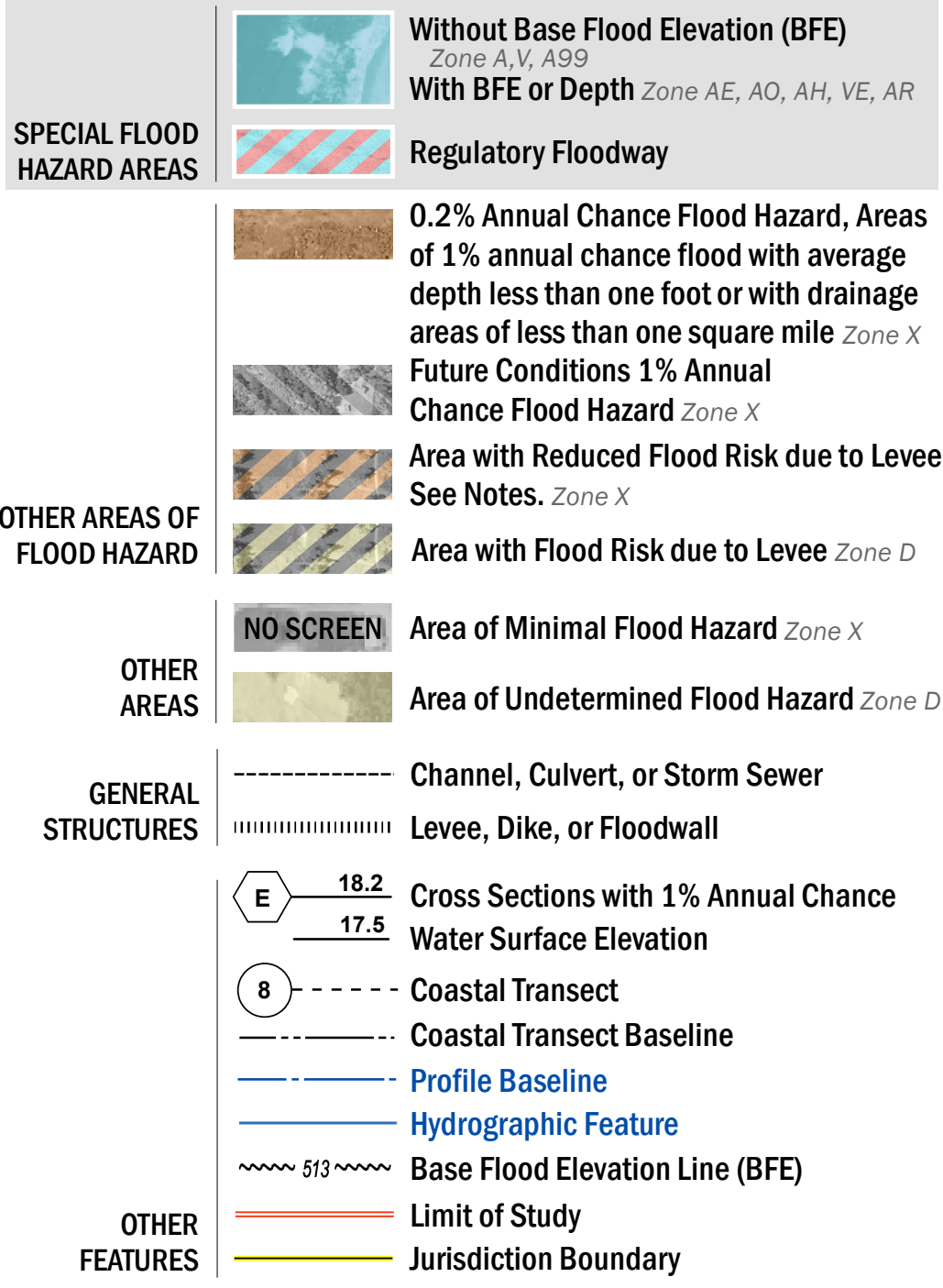


FLOOD HAZARD INFORMATION

SEE FIS REPORT FOR DETAILED LEGEND AND INDEX MAP FOR FIRM PANEL LAYOUT
THE INFORMATION DEPICTED ON THIS MAP AND SUPPORTING
DOCUMENTATION ARE ALSO AVAILABLE IN DIGITAL FORMAT AT
[HTTP://MSC.FEMA.GOV](http://MSC.FEMA.GOV)



NOTES TO USERS

For information and questions about this Flood Insurance Rate Map (FIRM), available products associated with this FIRM, including historic versions, the current map date for each FIRM panel, how to order products, or the National Flood Insurance Program (NFIP) in general, please call the FEMA Map Information eXchange at 1-877-FEMA-MAP (1-877-336-6627) or visit the FEMA Flood Map Service Center website at <http://msc.fema.gov>. Available products may include previously issued Letters of Map Change, a Flood Insurance Study Report, and/or digital versions of this map. Many of these products can be ordered or obtained directly from the website.

Communities annexing land on adjacent FIRM panels must obtain a current copy of the adjacent panel as well as the current FIRM Index. These may be ordered directly from the Map Service Center at the number listed above.

For community and countywide map dates refer to the Flood Insurance Study report for this jurisdiction.

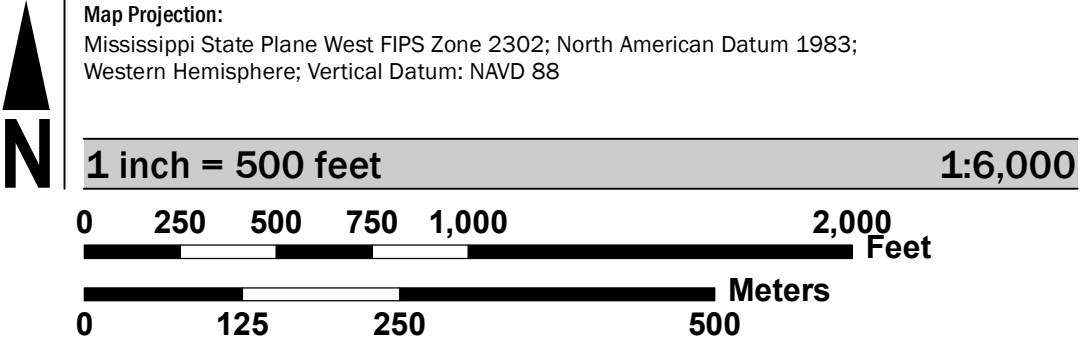
To determine if flood insurance is available in this community, contact your insurance agent or call the National Flood Insurance Program at 1-800-638-6620.

Base map information shown on this FIRM was derived from digital orthophotography collected by the U.S. Department of Agriculture Farm Service Agency. This imagery was flown in 2014 and was produced with a 1 meter ground sample distance.

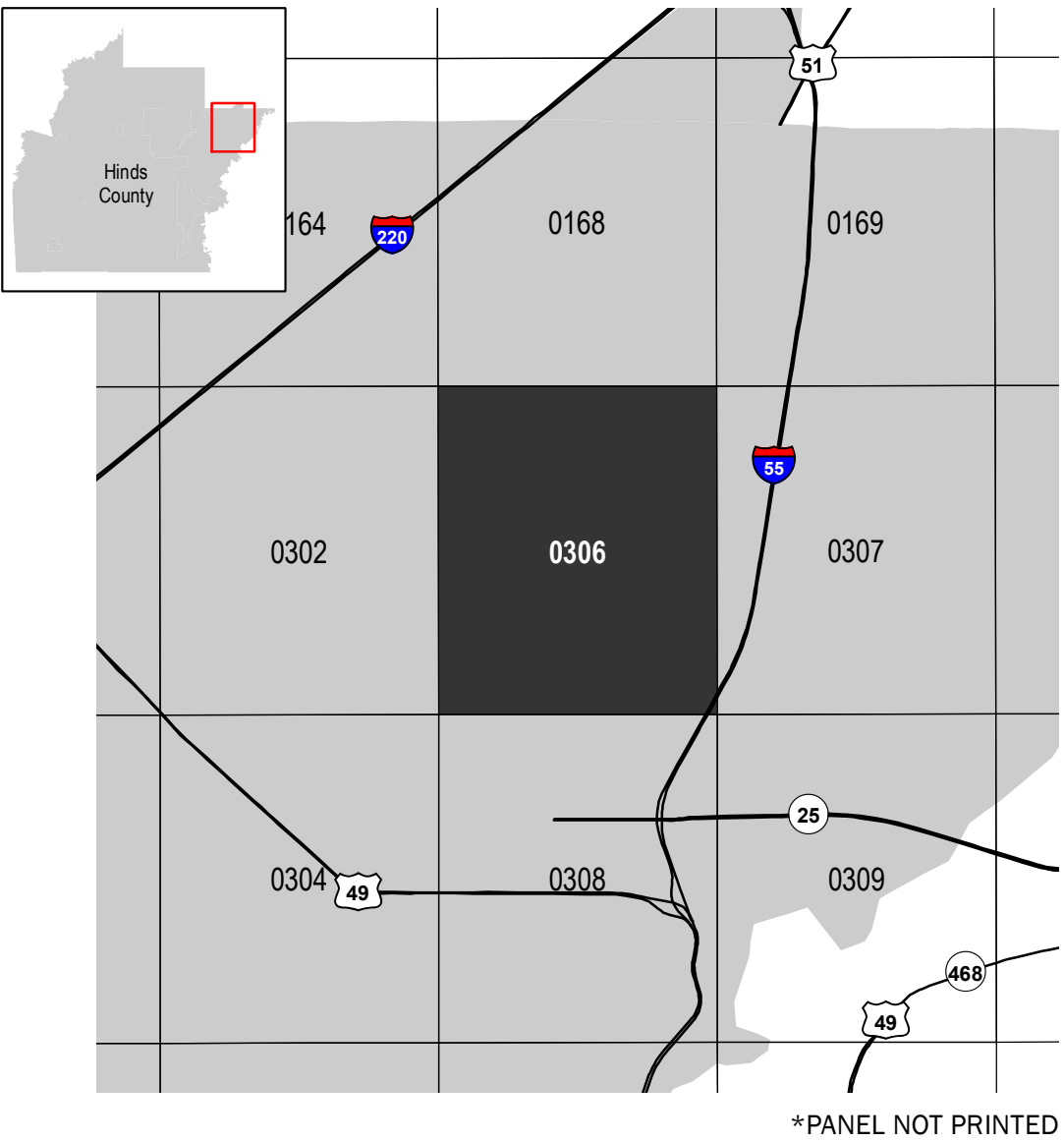


This map was produced through the Mississippi Risk Map Program, a cooperative partnership between the State of Mississippi and the Department of Homeland Security-Federal Emergency Management Agency.

SCALE



PANEL LOCATOR



FEMA
National Flood Insurance Program

NATIONAL FLOOD INSURANCE PROGRAM
FLOOD INSURANCE RATE MAP

HINDS COUNTY,
MISSISSIPPI
and Incorporated Areas
PANEL 306 OF 600

Panel Contains:
COMMUNITY JACKSON, CITY OF
NUMBER 280072
SUFFIX 0306 J

PRELIMINARY
2/9/2018

VERSION NUMBER
2.3.3.3
MAP NUMBER
28049C0306J
MAP REVISED