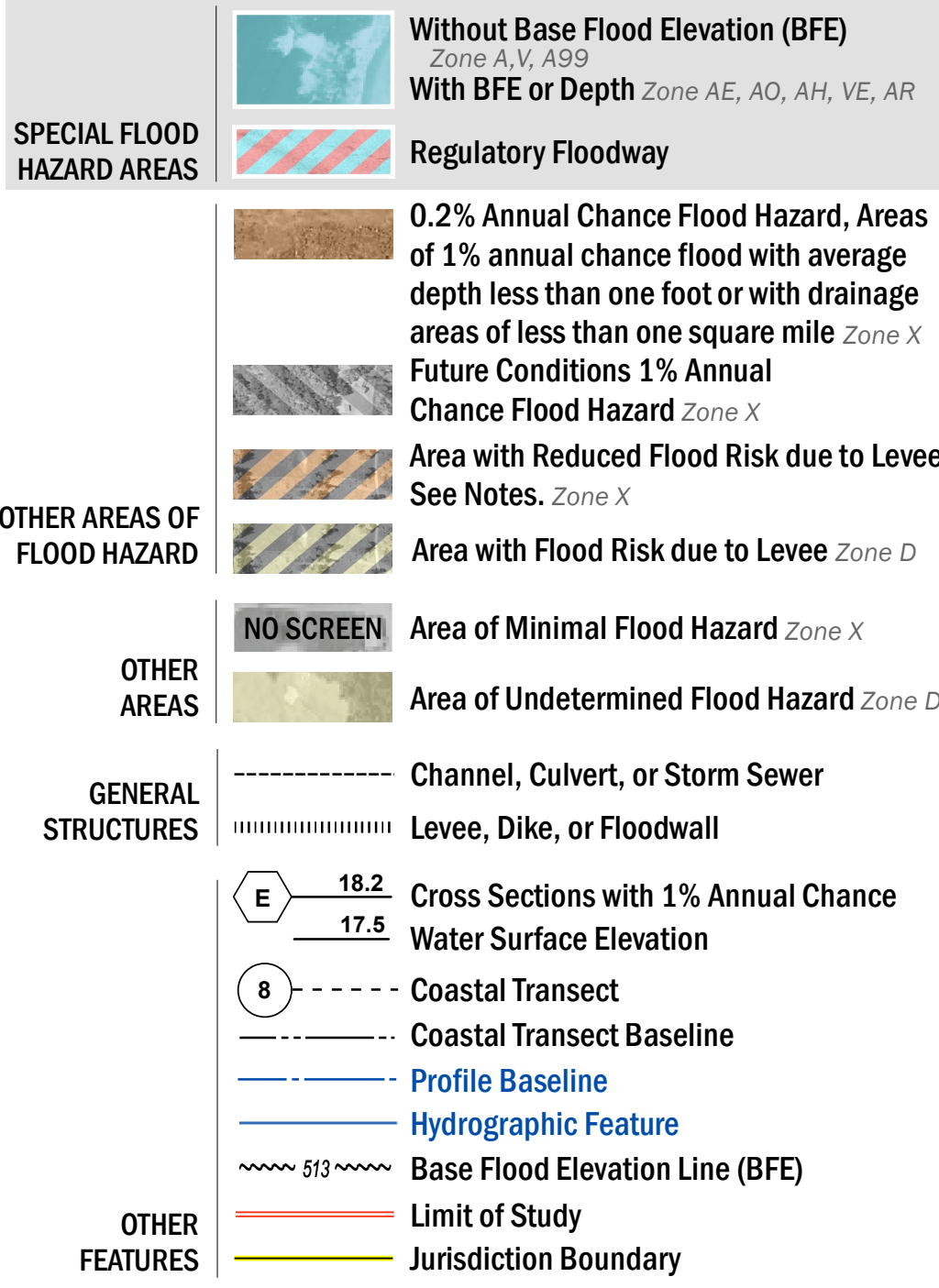


FLOOD HAZARD INFORMATION

SEE FIS REPORT FOR DETAILED LEGEND AND INDEX MAP FOR FIRM PANEL LAYOUT
THE INFORMATION DEPICTED ON THIS MAP AND SUPPORTING
DOCUMENTATION ARE ALSO AVAILABLE IN DIGITAL FORMAT AT
[HTTP://MSC.FEMA.GOV](http://msc.fema.gov)



NOTES TO USERS

For information and questions about this Flood Insurance Rate Map (FIRM), available products associated with this FIRM, including historic versions, the current map date for each FIRM panel, how to order products, or the National Flood Insurance Program (NFIP) in general, please call the FEMA Map Information eXchange at 1-877-FEMA-MAP (1-877-336-6627) or visit the FEMA Flood Map Service Center website at <http://msc.fema.gov>. Available products may include previously issued Letters of Map Change, a Flood Insurance Study Report, and/or digital versions of this map. Many of these products can be ordered or obtained directly from the website.

Communities annexing land on adjacent FIRM panels must obtain a current copy of the adjacent panel as well as the current FIRM Index. These may be ordered directly from the Map Service Center at the number listed above.

For community and countywide map dates refer to the Flood Insurance Study report for this jurisdiction.

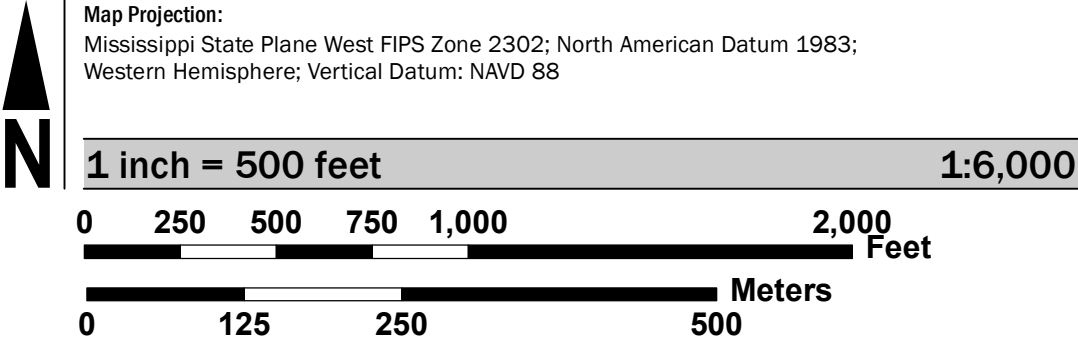
To determine if flood insurance is available in this community, contact your Insurance agent or call the National Flood Insurance Program at 1-800-638-6620.

Base map information shown on this FIRM was derived from digital orthophotography collected by the U.S. Department of Agriculture Farm Service Agency. This imagery was flown in 2014 and was produced with a 1 meter ground sample distance.

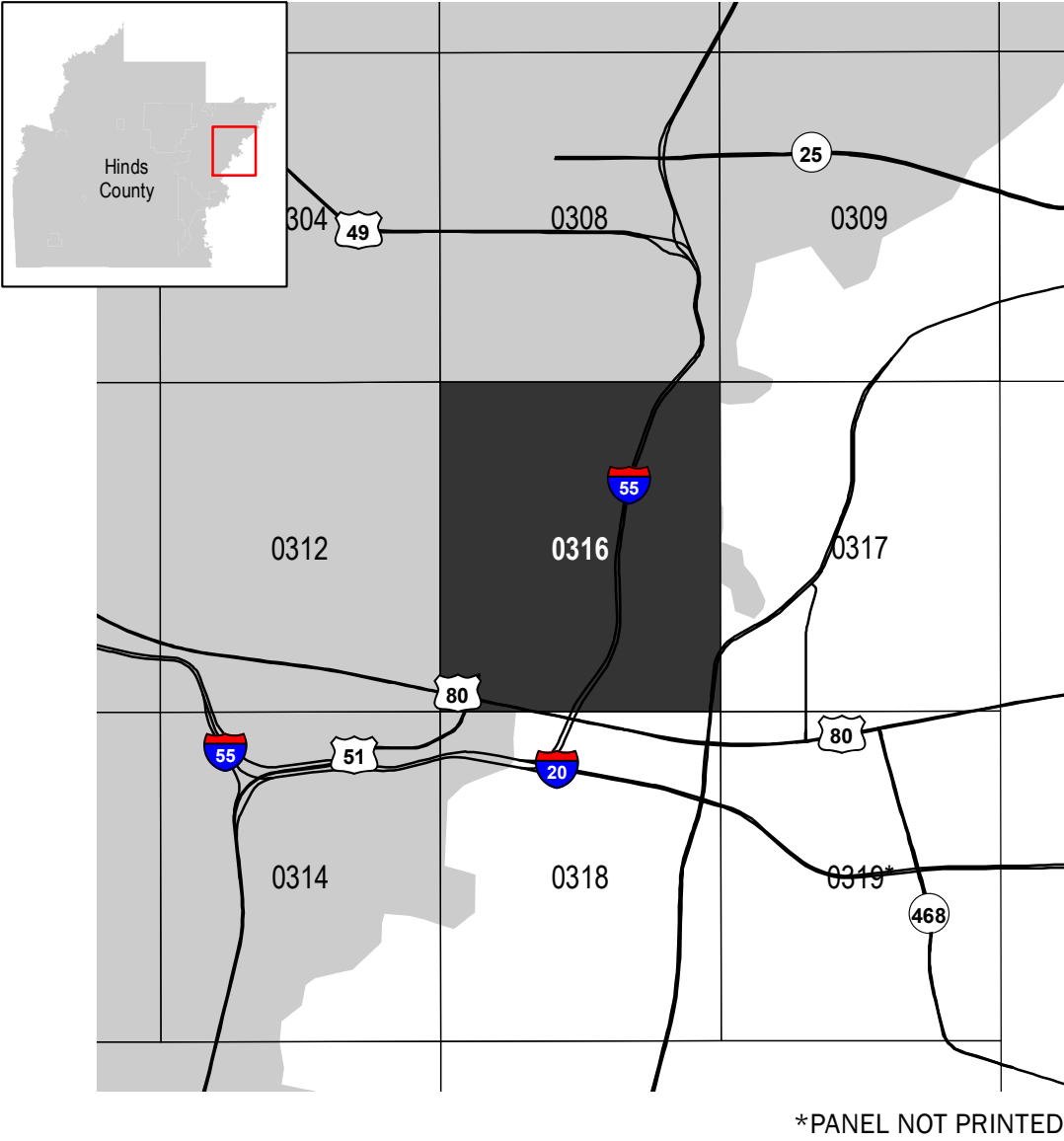
ACCREDITED LEVEE: Check with your local community to obtain more information, such as the estimated level of protection provided (which may exceed the 1-percent-annual-chance level) and Emergency Action Plan, on the levee system(s) shown as providing protection for areas on this panel. To mitigate flood risk in residual risk areas, property owners and residents are encouraged to consider flood insurance and floodproofing or other protective measures. For more information on flood insurance, interested parties should visit <http://www.fema.gov/national-flood-insurance-program>.

This map was produced through the Mississippi Risk Map Program, a cooperative partnership between the State of Mississippi and the Department of Homeland Security-Federal Emergency Management Agency.

SCALE



PANEL LOCATOR



National Flood Insurance Program

NATIONAL FLOOD INSURANCE PROGRAM
FLOOD INSURANCE RATE MAP

HINDS COUNTY, MISSISSIPPI
and Incorporated Areas

PANEL 316 OF 600

Panel Contains:
COMMUNITY JACKSON, CITY OF

NUMBER 280072
SUFFIX 0316
J

PRELIMINARY
2/9/2018

VERSION NUMBER
2.3.3.3

MAP NUMBER
28049C0316J

MAP REVISED