

# GEOLOGICAL MAP OF MISSISSIPPI

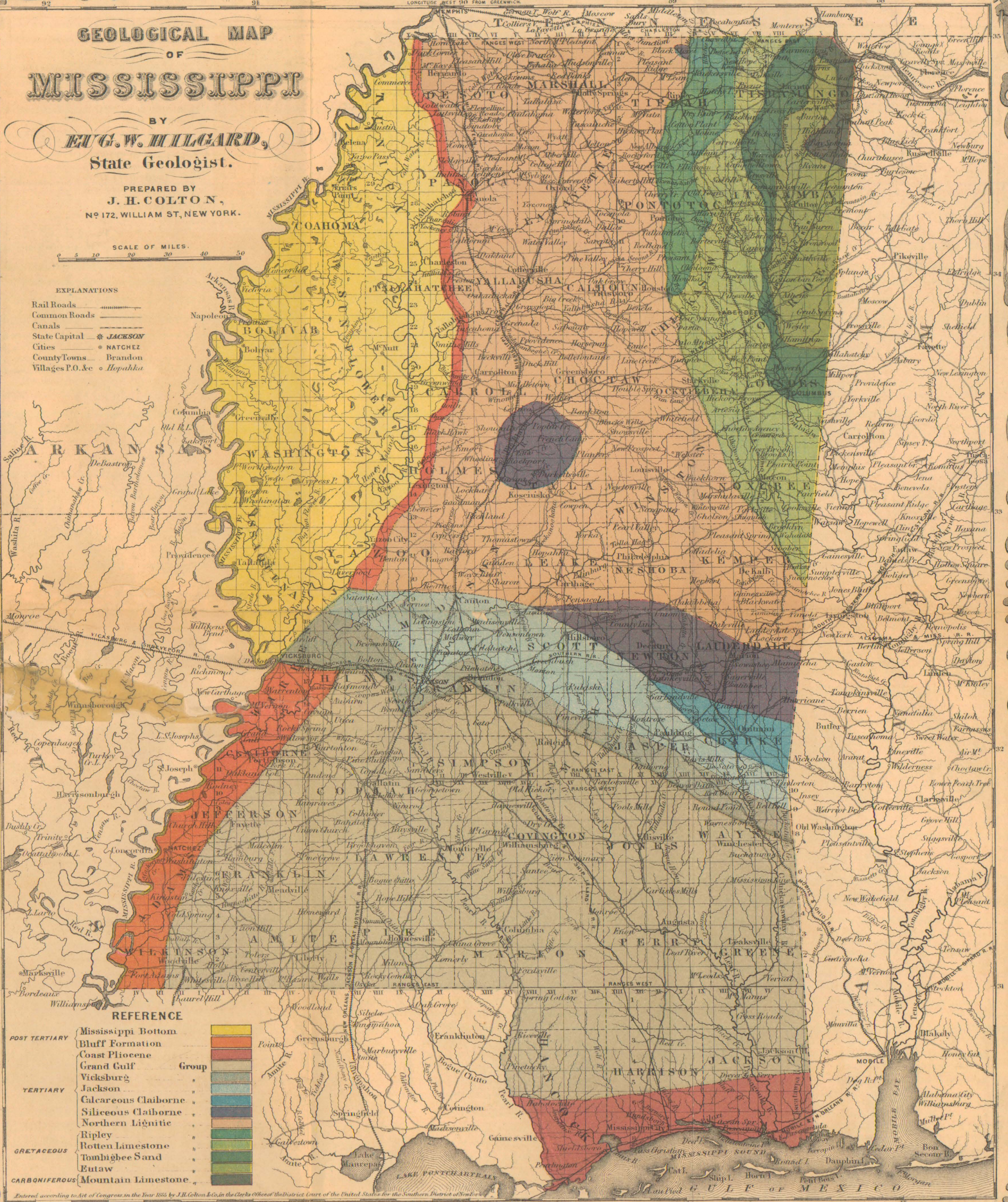
BY  
**EUG. W. HILGARD,**  
State Geologist.

PREPARED BY  
**J. H. COLTON,**  
No 172, WILLIAM ST, NEW YORK.

SCALE OF MILES.  
0 5 10 20 30 40 50

### EXPLANATIONS

- Rail Roads
- Common Roads
- Canals
- State Capital \* JACKSON
- Cities NATCHEZ
- County Towns BRANDON
- Villages P.O. &c HOPKINS



### REFERENCE

Group	Formation
POST TERTIARY	Mississippi Bottom
	Bluff Formation
	Coast Pliocene
	Grand Gulf
TERTIARY	Vicksburg
	Jackson
CRETACEOUS	Calcareous Claiborne
	Siliceous Claiborne
	Northern Liénitic
	Ripley
	Rotten Limestone
CARBONIFEROUS	Tombigbee Sand
	Eutaw
	Mountain Limestone

Entered according to Act of Congress in the Year 1855 by J.H. Colton & Co. in the Clerk's Office of the District Court of the United States for the Southern District of New York.