



MISSISSIPPI DEPARTMENT OF ENVIRONMENTAL QUALITY

OFFICE OF GEOLOGY

OPEN-FILE REPORT 346

GEOLOGIC MAP

of the

TROY SOUTHEAST QUADRANGLE

Chickasaw, Lee, and Pontotoc Counties, Mississippi



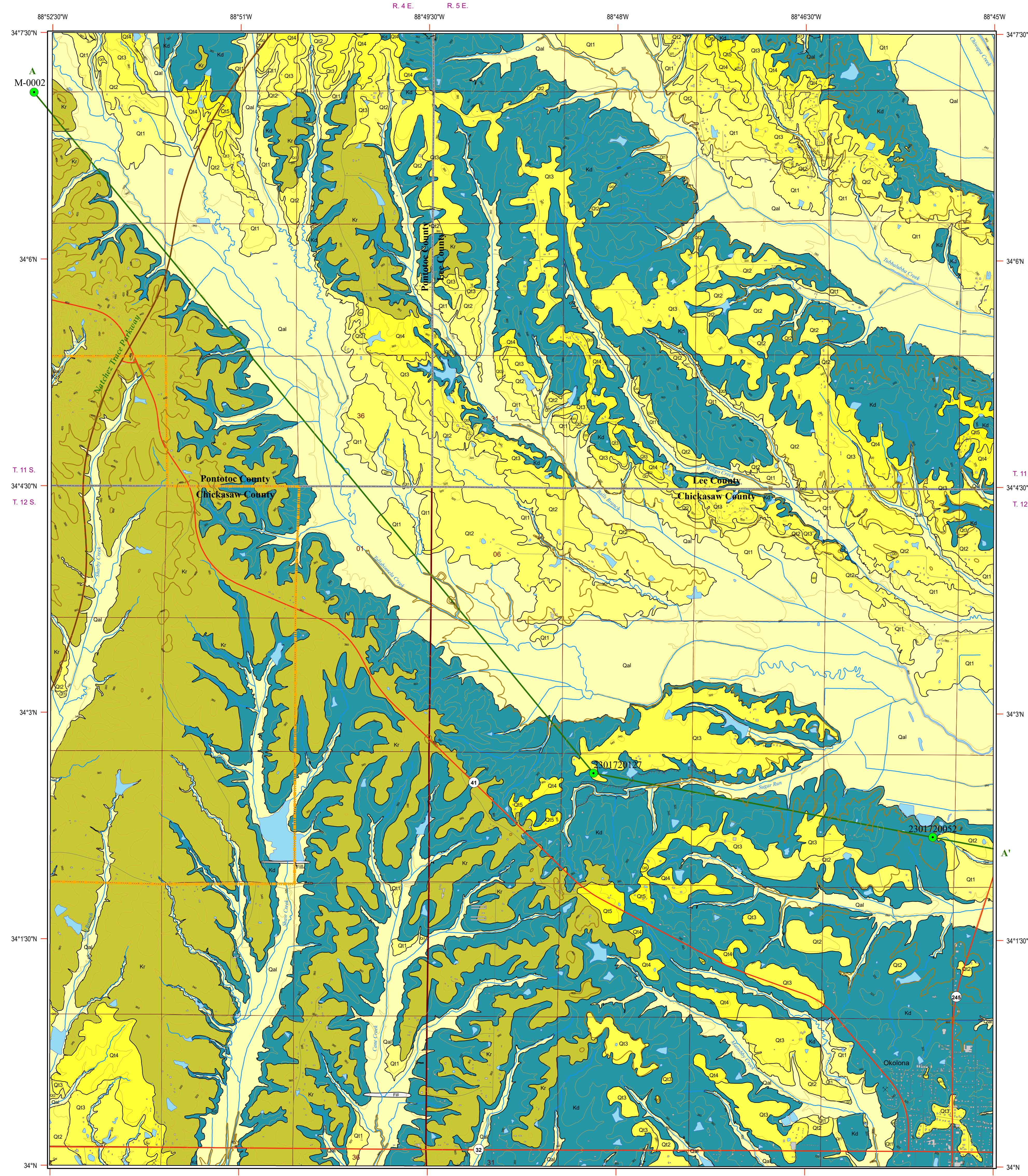
Geology by Darrel W. Schmitz, RPG, Ernest E. Russell, PhD, and Jonathan R. Leard, RPG



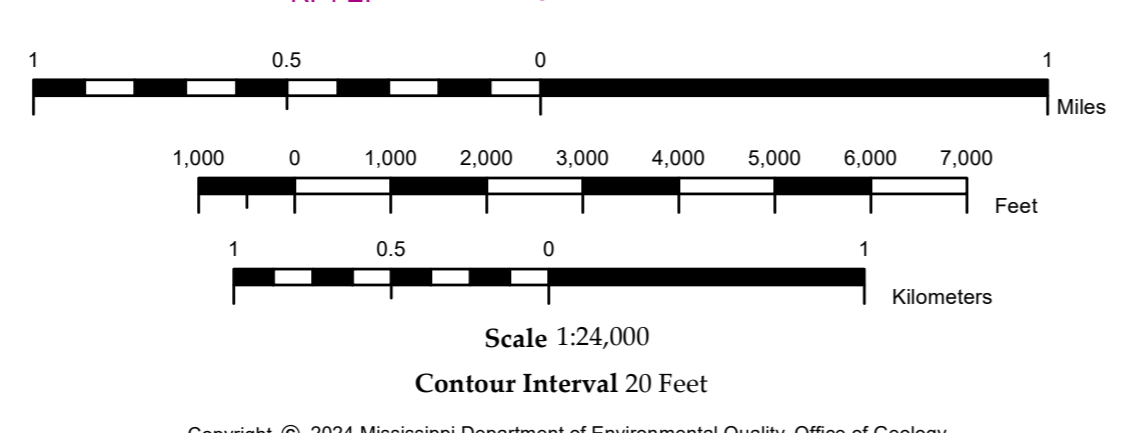
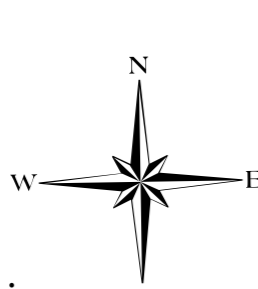
2024

DESCRIPTION OF MAP UNITS

Table with 4 columns: Geological Period (QUATERNARY, CRETACEOUS), Sub-period (HOLOCENE, PLEISTOCENE, UPPER CRETACEOUS), Map Unit Code (Fill, Qal, Q1-Q5, Kr, Kd), and Description of the unit.

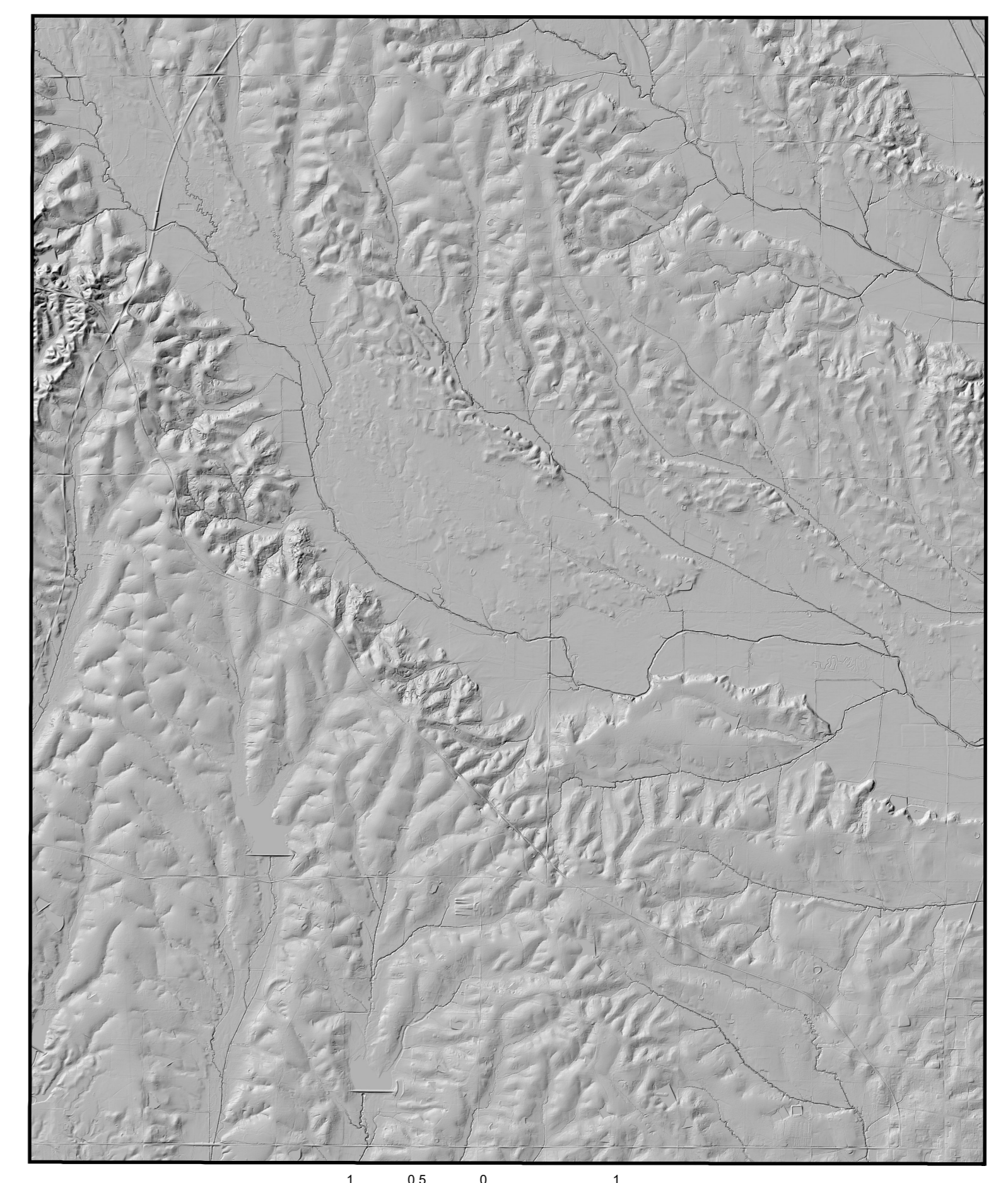
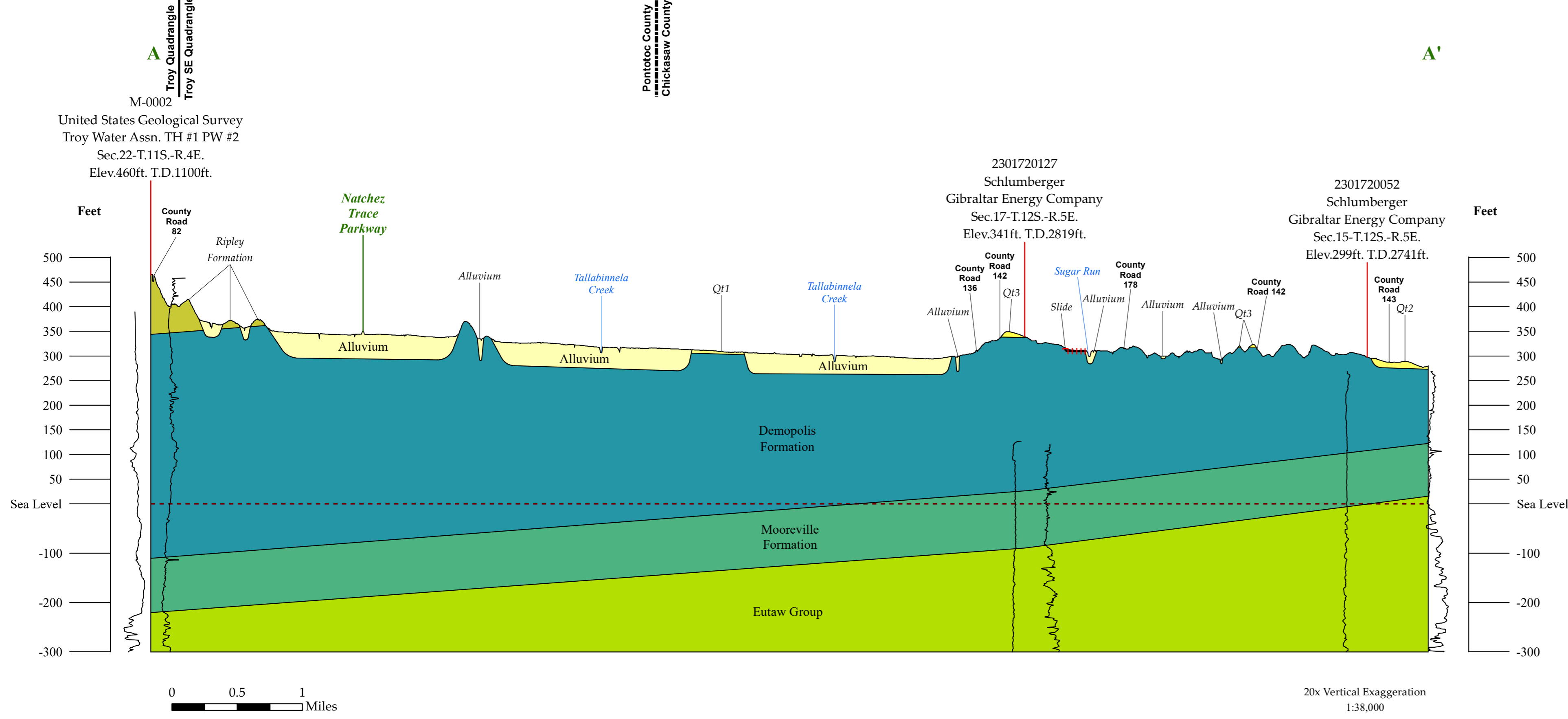


GEOLOGIC MAP TROY SOUTHEAST QUADRANGLE Chickasaw, Lee, and Pontotoc Counties, Mississippi



Geology field checked in 1985, 1998, and 2023 using the 1966 photo revised in 1979 U.S. Geological Survey 7.5-minute topographic quadrangle... Sources: Contours obtained from Mississippi Automated Resource Information System (MARIS), Public Land Survey System, 1:24,000 scale...

Structural Cross-Section of the Troy Southeast 7.5-Minute Geologic Quadrangle



2009-2018 Mississippi Statewide LIDAR-Generated DEM and Hill Shade