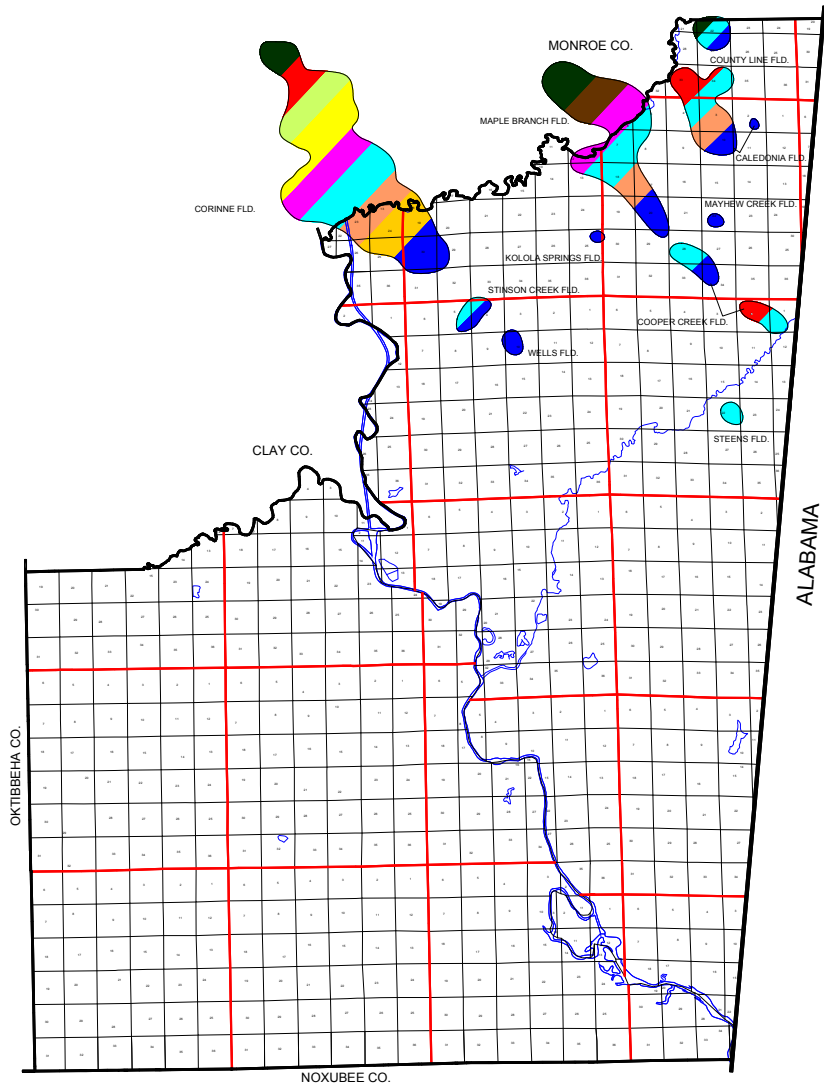


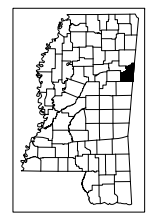
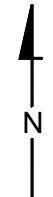
R 16 E | R 17 E | R 19 W | R 18 W | R 17 W | R 16 W

T 15 S
T 16 S
T 17 S
T 19 N
T 18 N
T 17 N



R 16 E | R 17 E | R 18 E | R 19 E

T 15 S
T 16 S
T 17 S
T 18 S
T 19 S
T 20 S



ERA	SYSTEM	SERIES	GROUP	FORMATION	COLORKEY	
CENOZOIC	QUATERNARY	Holocene				
		Pleistocene				
		Pliocene				
	TERTIARY	Miocene			Fris	
			Oligocene	Vicksburg		
			Eocene	Clabome	Cockfield Sparta Zipha	
		Paleocene		Wilcox		
				Midway	Clayton	
				Seima		
				Upper Gulfian	Eutaw	Eagle Ford Upper Tuscaloosa Middle Tuscaloosa Marine Shale Lower Tuscaloosa
MESOZOIC	CRETACEOUS	Lower Conmanchean	Wistula	Dantzler		
			Fredericksburg			
		Tertiary	Glen Rose	Palaux		
				Mooringport		
			Ferry Lake			
	Jurassic	Coahuilan	James			
			Rodessa			
			Pine Island			
			Sligo			
	JURASSIC	Upper	Cotton Valley	Haynesville		
			Louark	Buckner Smackover Norphet		
			Lower	Louann Salt		
TRASSIC			Eagle Mills			
PALEOZOIC	PERMIAN (Absent)					
	PENNSYLVANIAN	Chesterian	Pottsville	Nason Nevada Buckers Gilmer Dobson Millsville Carter		
				Parkwood-Pennington	Sanders Falmouth Rea	
				Pride Mountain	Evans Lewis	
	DEVONIAN	Hamman		Devonian		
	SILURIAN	Nagaran				
	ORDOVICIAN	Stones River				
CAMBRIAN	Knox					
PRECAMBRIAN						

Mississippi Office of Geology
 OPEN-FILE REPORT 177
 LOWNDES COUNTY
 MISSISSIPPI
 OIL & GAS PRODUCTION
 INDEX MAP

Prepared by: Stephen D. Champlin, Geologist, September, 2002

Field production information is based on data reported in Mississippi State Oil & Gas Board publications through December, 2000.