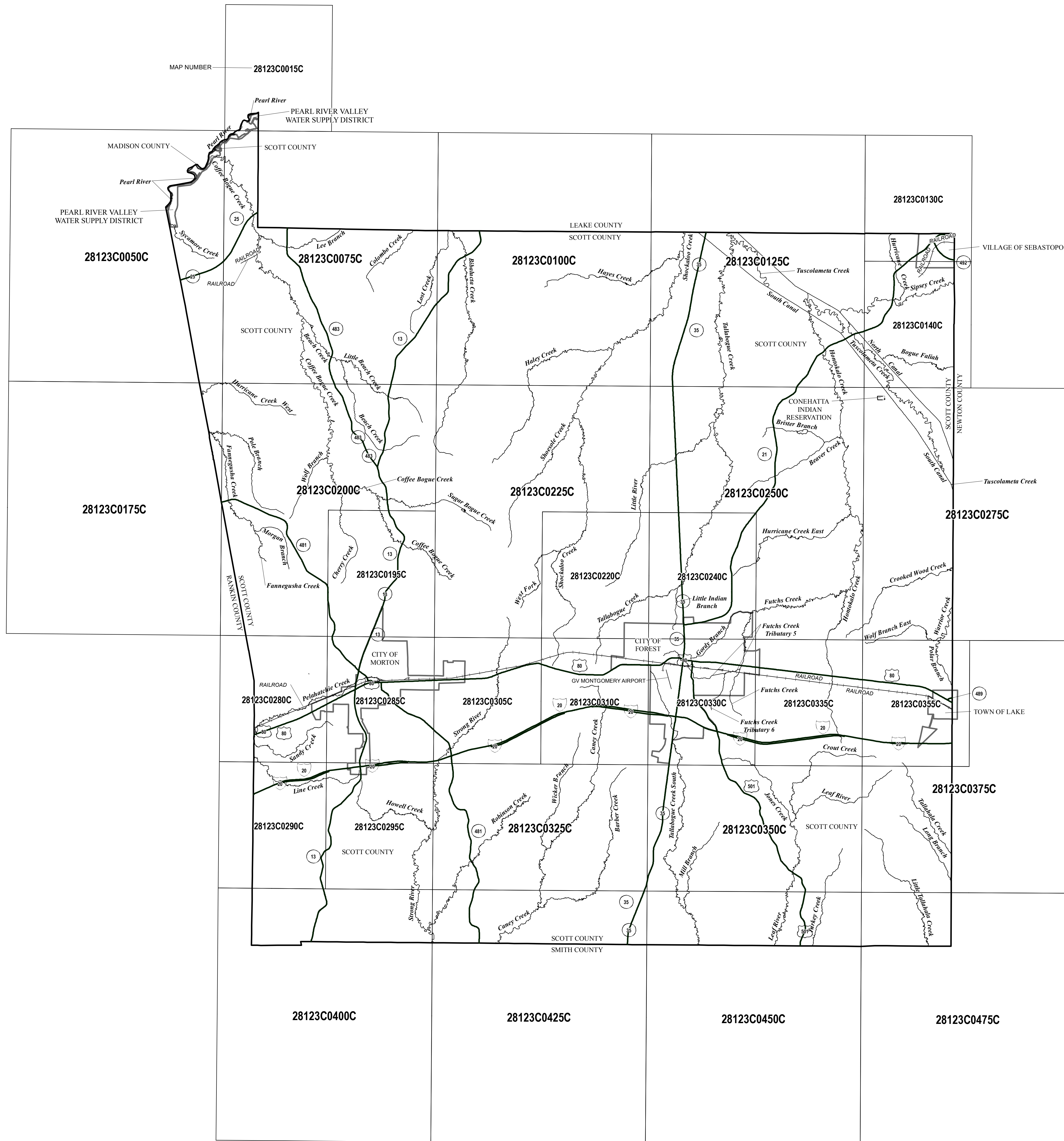


NOTE TO USERS

FEMA maintains information about map features, such as street locations and names, in or near designated flood hazard areas. Requests to revise information in or near designated flood hazard areas may be provided to FEMA during the community review period, at the final Consultation Coordination Officer's meeting, or during the statutory 90-day appeal period. Approved requests for changes will be shown on the final printed FIRM.

NOTE TO USER

Future revisions to this FIRM Index will only be issued to communities that are located on FIRM panels being revised. This FIRM Index therefore remains valid for FIRM panels dated [mm/dd/yyyy] or earlier. Please refer to the "MOST RECENT FIRM PANEL DATE" column in the Listing of Communities table to determine the most recent FIRM index date for each community.



LISTING OF COMMUNITIES

COMMUNITY NAME	COMMUNITY NUMBER	LOCATED ON PANEL(S)	INITIAL NFIP MAP DATE	INITIAL FIRM DATE	MOST RECENT FIRM PANEL DATE
FOREST, CITY OF	280148	220, 240, 310, 330, 335	JUNE 28, 1974	FEBRUARY 1, 1987	
LAKE, TOWN OF	280149	355	JULY 19, 1974	AUGUST 5, 1985	
MORTON, CITY OF	280150	195, 280, 285, 295, 305	JUNE 7, 1974	SEPTEMBER 29, 1986	
PEARL RIVER VALLEY WATER SUPPLY DISTRICT	280338	15, 50, 75	AUGUST 11, 1978	MARCH 2, 1993	
SCOTT COUNTY (UNINCORPORATED AREAS)	280280	15, 50, 75, 100, 125, 130, 140, 175, 195, 200, 220, 225, 240, 250, 275, 280, 285, 290, 295, 305, 310, 325, 330, 335, 350, 355, 375, 400, 425, 450, 475	JUNE 17, 1977	SEPTEMBER 1, 1987	
SEBASTOPOL, VILLAGE OF	280151	130, 140	FEBRUARY 7, 1975	JUNE 3, 1986	

MAP REPOSITORIES

(Maps available for reference only, not for distribution.)

FOREST, CITY OF:
City Hall
123 South Davis Street
Forest, Mississippi 39074

LAKE, TOWN OF:
Town Hall
100 Front Street
Lake, Mississippi 39092

MORTON, CITY OF:
City Clerk
97 West First Avenue
Morton, Mississippi 39117

PEARL RIVER WATER SUPPLY DISTRICT:
115 Madison Landing Circle
Ridgeland, Mississippi 39157

SCOTT COUNTY (UNINCORPORATED AREAS):
County Courthouse
100 East Main Street
Forest, Mississippi 39074

SEBASTOPOL, VILLAGE OF:
Village Hall
17403 Highway 21
Sebastopol, Mississippi 39359

MAP DATES

This FIRM Index displays the map date for each FIRM panel at the time that this Index was printed. Because this Index may not be distributed to unaffected communities in subsequent revisions, users may determine the current map date for each FIRM panel by visiting the FEMA Map Service Center website at <http://msc.fema.gov> or by calling the Map Service Center at 1-800-358-9616.

Communities annexing land on adjacent FIRM panels must obtain a current copy of the adjacent panel as well as the current FIRM Index. These may be ordered directly from the Map Service Center at the number listed above.



NATIONAL FLOOD INSURANCE PROGRAM

MAP INDEX

FIRM
FLOOD INSURANCE RATE MAP
SCOTT COUNTY,
MISSISSIPPI
AND INCORPORATED AREAS
(SEE LISTING OF COMMUNITIES TABLE)

MAP INDEX

PANELS PRINTED: 15, 50, 75, 100, 125, 130, 140, 175, 195, 200, 220, 225, 240, 250, 275, 280, 285, 290, 295, 305, 310, 325, 330, 335, 350, 355, 375, 400, 425, 450, 475

PRELIMINARY
DEC 10 2009



MAP NUMBER
28123CIND0A
EFFECTIVE DATE

Federal Emergency Management Agency