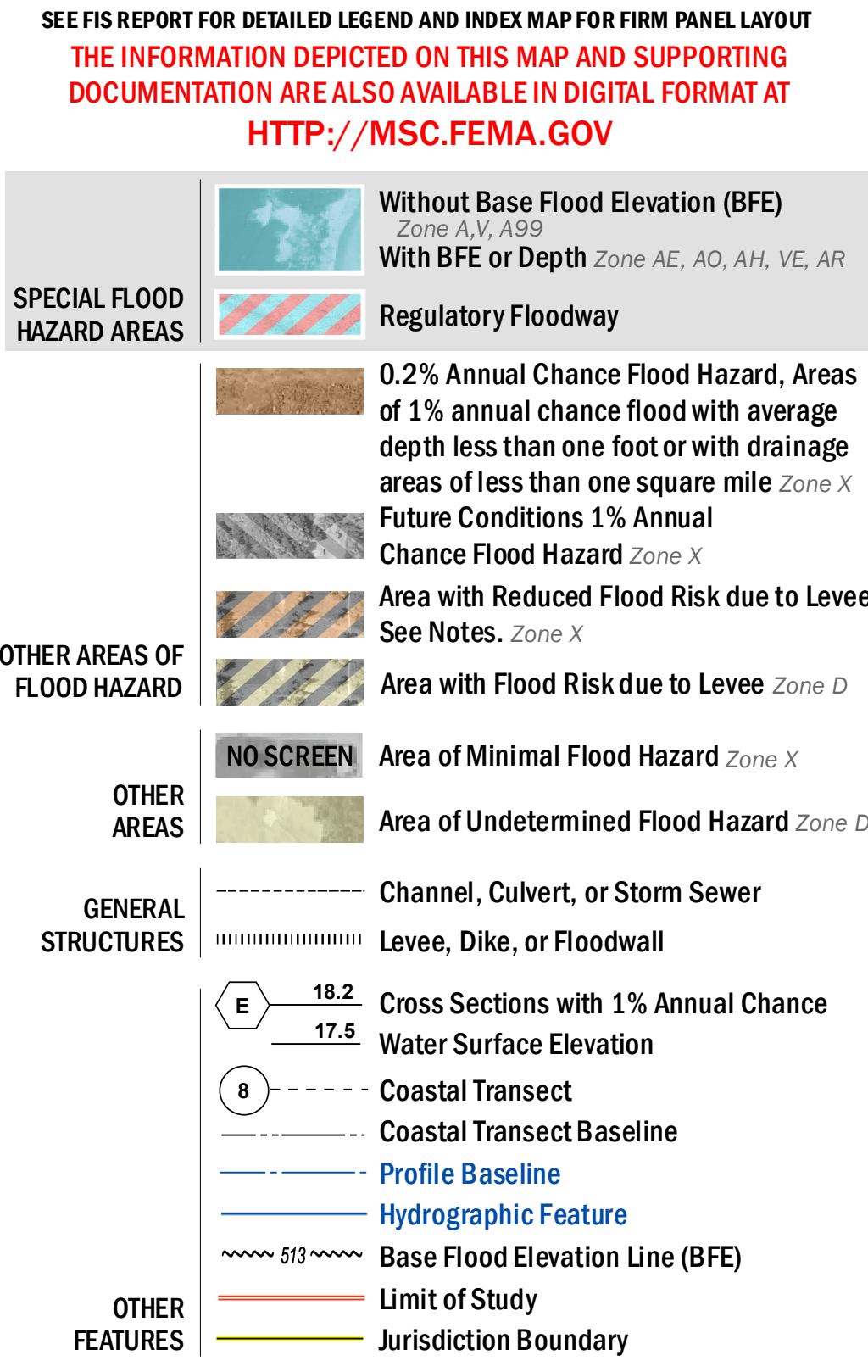


FLOOD HAZARD INFORMATION



NOTES TO USERS

For information and questions about this Flood Insurance Rate Map (FIRM), available products associated with this FIRM, including historic versions, the current map date for each FIRM panel, how to order products, or the National Flood Insurance Program (NFIP) in general, please call the FEMA Map Information eXchange at 1-877-FEMA-MAP (1-877-336-2627) or visit the FEMA Flood Map Service Center website at <http://msc.fema.gov>. Available products may include previously issued Letters of Map Change, a Flood Insurance Study Report, and/or digital versions of this map. Many of these products can be ordered or obtained directly from the website.

Communities annexing land on adjacent FIRM panels must obtain a current copy of the adjacent panel as well as the current FIRM Index. These may be ordered directly from the Map Service Center at the number listed above.

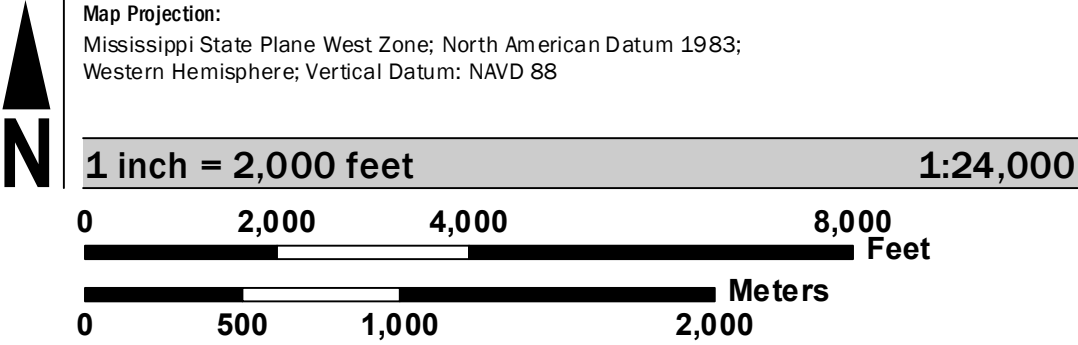
For community and countywide map dates refer to the Flood Insurance Study report for this jurisdiction.

To determine if flood insurance is available in this community, contact your insurance agent or call the National Flood Insurance Program at 1-800-638-6620.

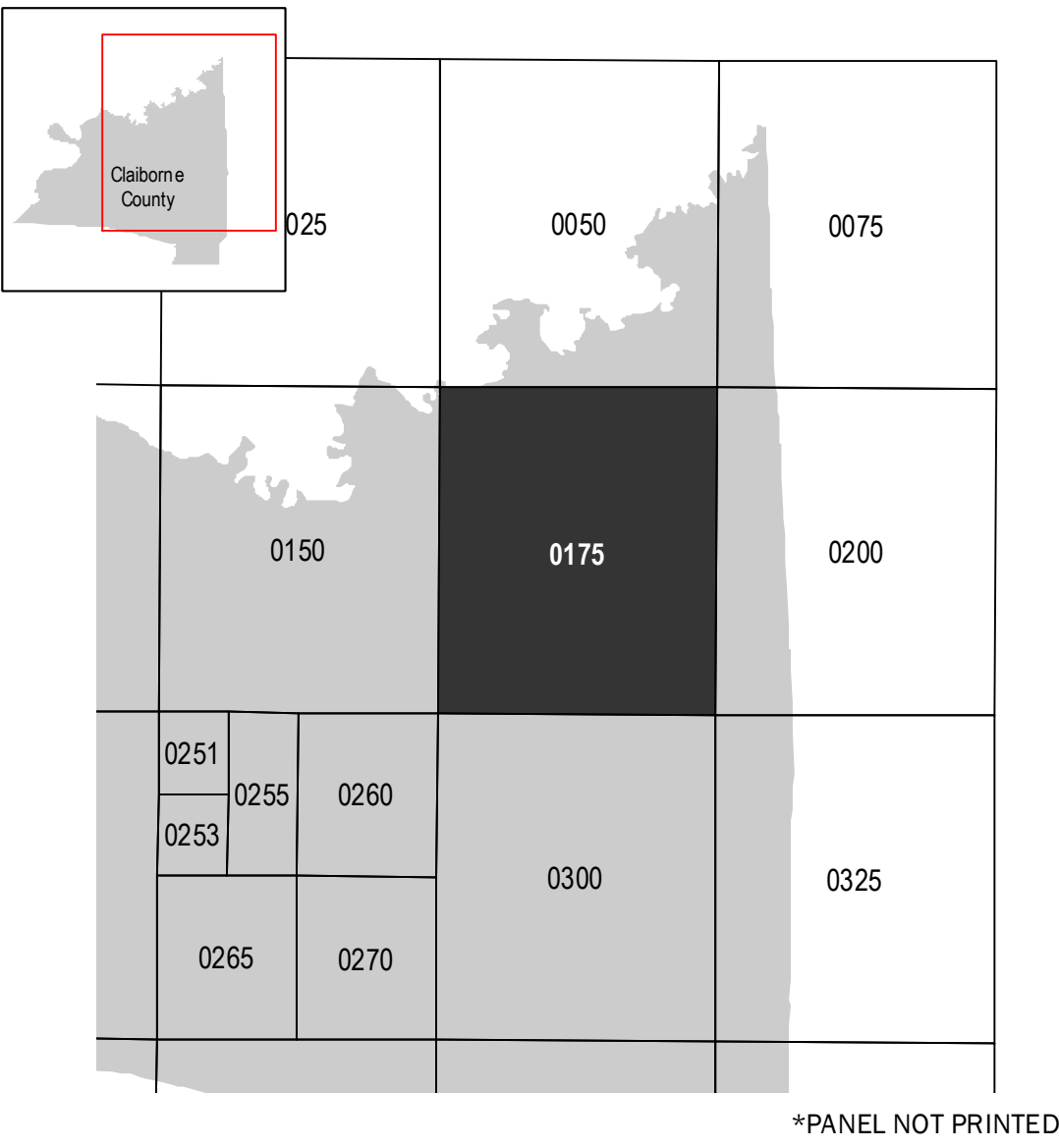
Base map information shown on this FIRM was derived from digital orthophotography collected by the U.S. Department of Agriculture Farm Service Agency. This imagery was flown in 2014 and was produced with a 1 meter ground sample distance.

This map was produced through the Mississippi Risk Map Program, a cooperative partnership between the State of Mississippi and the Department of Homeland Security-Federal Emergency Management Agency.

SCALE



PANEL LOCATOR



NATIONAL FLOOD INSURANCE PROGRAM  
FLOOD INSURANCE RATE MAP  
CLAIBORNE COUNTY,  
MISSISSIPPI  
and Incorporated Areas  
PANEL 175 of 450

Panel Contains:  
COMMUNITY  
CLAIBORNE COUNTY

NUMBER PANEL SUFFIX  
280201 0175 D

PRELIMINARY  
2/9/2018

VERSION NUMBER  
2.3.3.3  
MAP NUMBER  
28021C0175D  
MAP REVISED