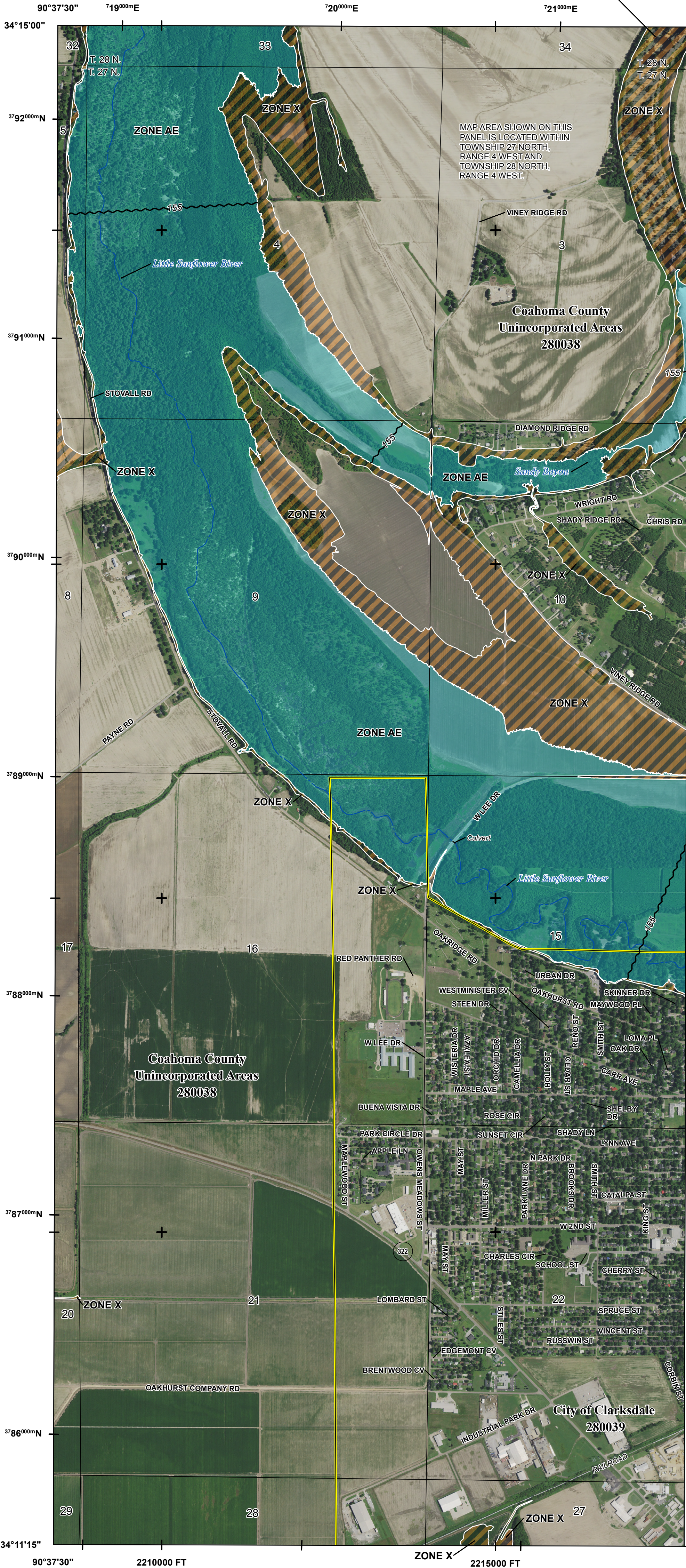


Note: This area is shown as being protected from the 1-percent annual chance or greater flood hazard by a levee system. Overlapping or failure of any levee system is possible. For additional information see the "Accredited Levee Note" in Notes to Users.



THIS AREA SHOWN AT A SCALE OF 1"=500'
ON MAP NUMBER 28027C0277

THIS AREA SHOWN AT A SCALE OF 1"=500'
ON MAP NUMBER 28027C0279

FLOOD HAZARD INFORMATION

SEE FIS REPORT FOR DETAILED LEGEND AND INDEX MAP FOR FIRM PANEL LAYOUT
THE INFORMATION DEPICTED ON THIS MAP AND SUPPORTING
DOCUMENTATION ARE ALSO AVAILABLE IN DIGITAL FORMAT AT
[HTTPS://MSC.FEMA.GOV](https://MSC.FEMA.GOV)

SPECIAL FLOOD HAZARD AREAS		Without Base Flood Elevation (BFE) Zone A,V, A99
		With BFE or Depth Zone AE, AO, AH, VE, AR
OTHER AREAS OF FLOOD HAZARD		Regulatory Floodway
		0.2% Annual Chance Flood Hazard, Areas of 1% annual chance flood with average depth less than one foot or with drainage areas of less than one square mile Zone X
		Future Conditions 1% Annual Chance Flood Hazard Zone X
		Area with Reduced Flood Risk due to Levee See Notes. Zone X
OTHER AREAS		Area with Flood Risk due to Levee Zone D
		Area of Minimal Flood Hazard Zone X
GENERAL STRUCTURES		Area of Undetermined Flood Hazard Zone D
		Channel, Culvert, or Storm Sewer
OTHER FEATURES		Levee, Dike, or Floodwall
		Cross Sections with 1% Annual Chance Water Surface Elevation
		Coastal Transect
		Coastal Transect Baseline
		Profile Baseline
		Hydrographic Feature
		Base Flood Elevation Line (BFE)
		Limit of Study
		Jurisdiction Boundary
		Jurisdiction Boundary

NOTES TO USERS

For information and questions about this Flood Insurance Rate Map (FIRM), available products associated with this FIRM, including historic versions, the current map date for each FIRM panel, how to order products, or the National Flood Insurance Program (NFIP) in general, please call the FEMA Map Information eXchange at 1-877-FEMA-MAP (1-877-336-2627) or visit the FEMA Flood Map Service Center website at <https://msc.fema.gov>. Available products may include previously issued Letters of Map Change, a Flood Insurance Study Report, and/or digital versions of this map. Many of these products can be ordered or obtained directly from the website.

Communities annexing land on adjacent FIRM panels must obtain a current copy of the adjacent panel as well as the current FIRM Index. These may be ordered directly from the Flood Map Service Center at the number listed above.

For community and countywide map dates refer to the Flood Insurance Study Report for this jurisdiction.

To determine if flood insurance is available in this community, contact your Insurance agent or call the National Flood Insurance Program at 1-800-638-6620.

Base map information shown on this FIRM was provided in digital format by Mississippi Department of Environmental Quality, Mississippi Automated Resource Information System, and the United States Census Bureau. Ortho imagery was produced by National Agriculture Imagery Program (NAIP) in 2016 and has a 1-meter ground sample distance and by Surdex Corporation in 2015 and 2016 and has a 1-foot ground sample distance.

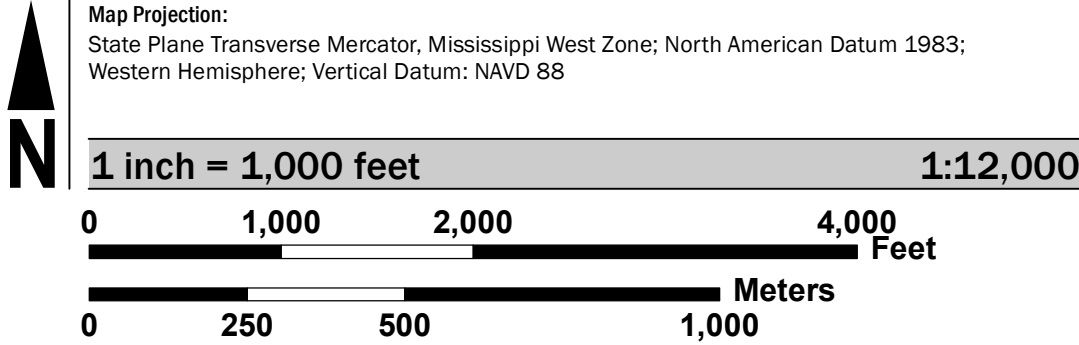
ACCREDITED LEVEE: Check with your local community to obtain more information, such as the estimated level of protection provided (which may exceed the 1-percent-annual-chance level) and Emergency Action Plan, on the levee system(s) shown as providing protection for areas on this panel. To mitigate flood risk in residual risk areas, property owners and residents are encouraged to consider flood insurance and floodproofing or other protective measures. For more information on flood insurance, interested parties should visit <https://www.fema.gov/national-flood-insurance-program>.

The map reflects more detailed and up-to-date stream channel configurations than those shown on the previous FIRM for this jurisdiction. The floodplains and floodways that were transferred from the previous FIRM may have been adjusted to conform to these new stream channel configurations. As a result, the Flood Profiles and FDTs may reflect stream channel distances that differ from what is shown on the map.

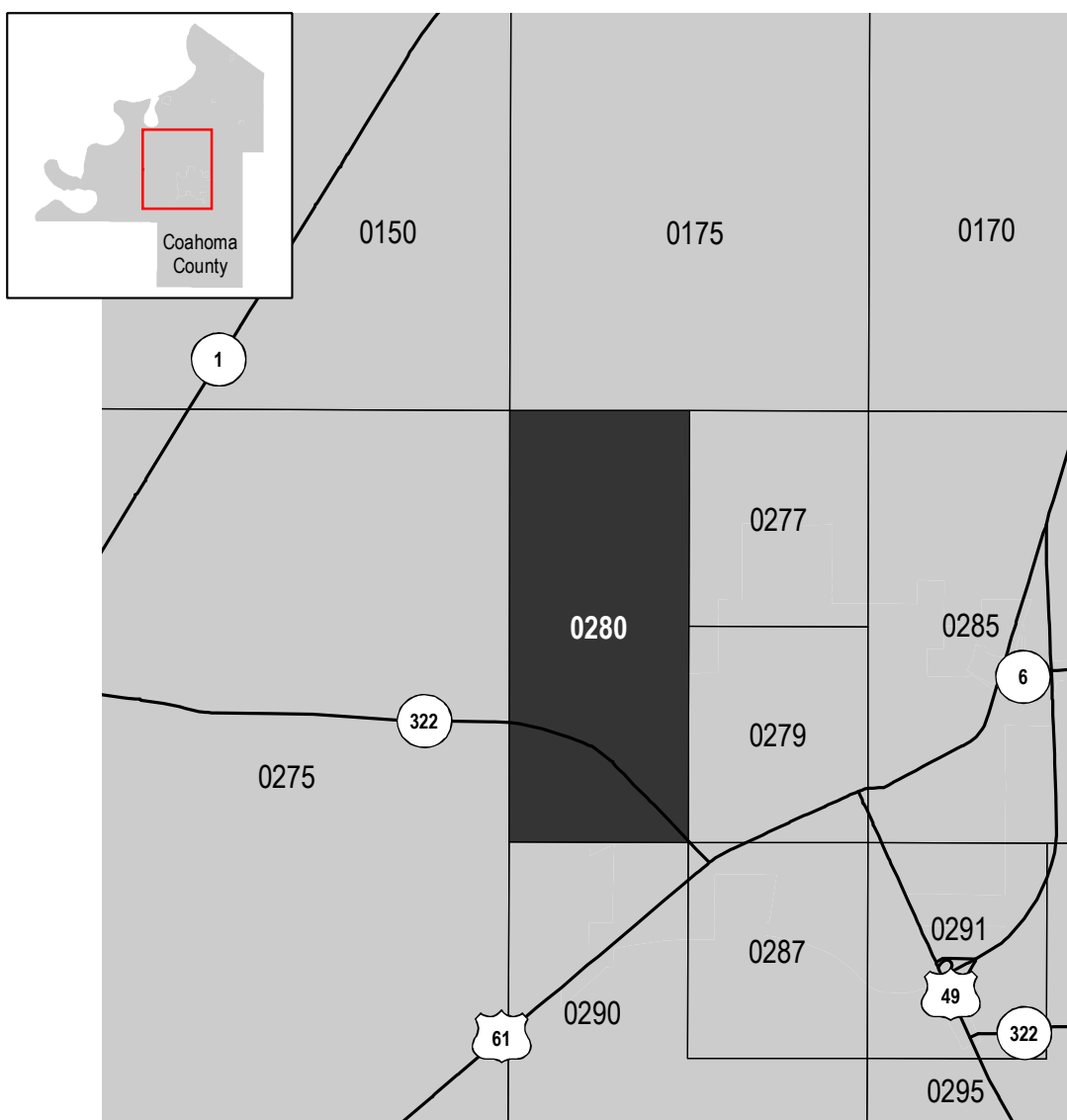


This map was produced through the Mississippi Risk Map Program, a cooperative partnership between the State of Mississippi and the Department of Homeland Security-Federal Emergency Management Agency.

SCALE



PANEL LOCATOR



NATIONAL FLOOD INSURANCE PROGRAM FLOOD INSURANCE RATE MAP

COAHOMA COUNTY,
MISSISSIPPI
and Incorporated Areas

PANEL 280 OF 525

Panel Contains:
COMMUNITY
CLARKSDALE, CITY OF
COAHOMA COUNTY

NUMBER
280039
280038

PANEL
0280
0280

SUFFIX
E
E

PRELIMINARY
11/14/2018

VERSION NUMBER
2.3.3.3

MAP NUMBER
28027C0280E

MAP REVISED