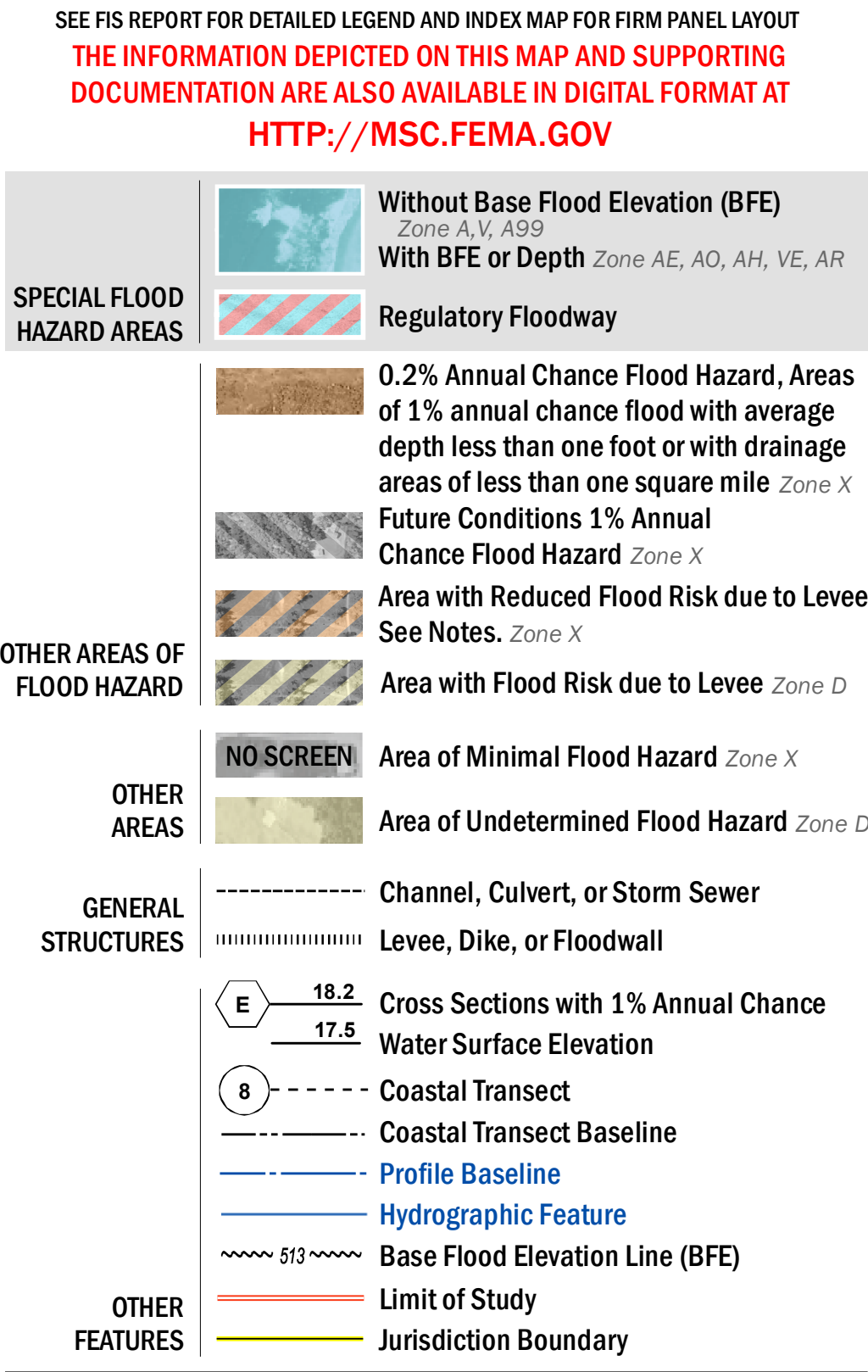


FLOOD HAZARD INFORMATION



NOTES TO USERS

For information and questions about this Flood Insurance Rate Map (FIRM), available products associated with this FIRM, including historic versions, the current map date for each FIRM panel, how to order products, or the National Flood Insurance Program (NFIP) in general, please call the FEMA Map Information Exchange at 1-877-FEMA-MAP (1-877-336-2627) or visit the FEMA Flood Map Service Center website at <http://msc.fema.gov>. Available products may include previously issued Letters of Map Change, a Flood Insurance Study Report, and/or digital versions of this map. Many of these products can be ordered or obtained directly from the website.

Communities annexing land on adjacent FIRM panels must obtain a current copy of the adjacent panel as well as the current FIRM Index. These may be ordered directly from the Flood Map Service Center at 1-800-638-6620.

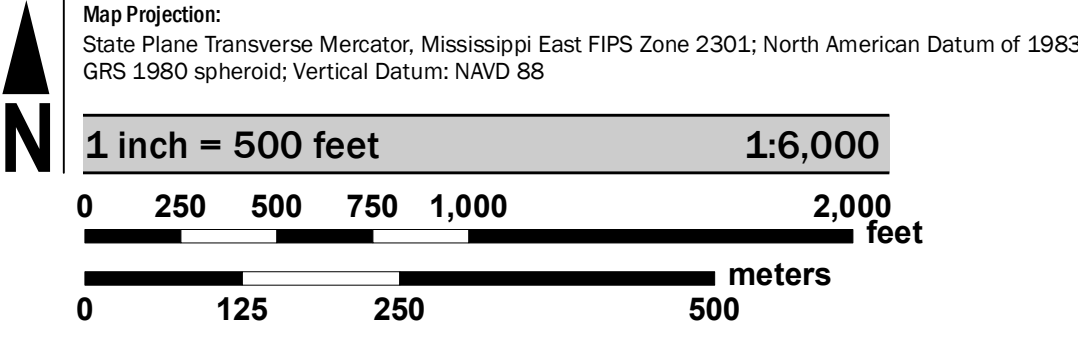
For community and countywide map dates refer to the Flood Insurance Study Report for this jurisdiction.

To determine if flood insurance is available in this community, contact your Insurance agent or call the National Flood Insurance Program at 1-800-638-6620.

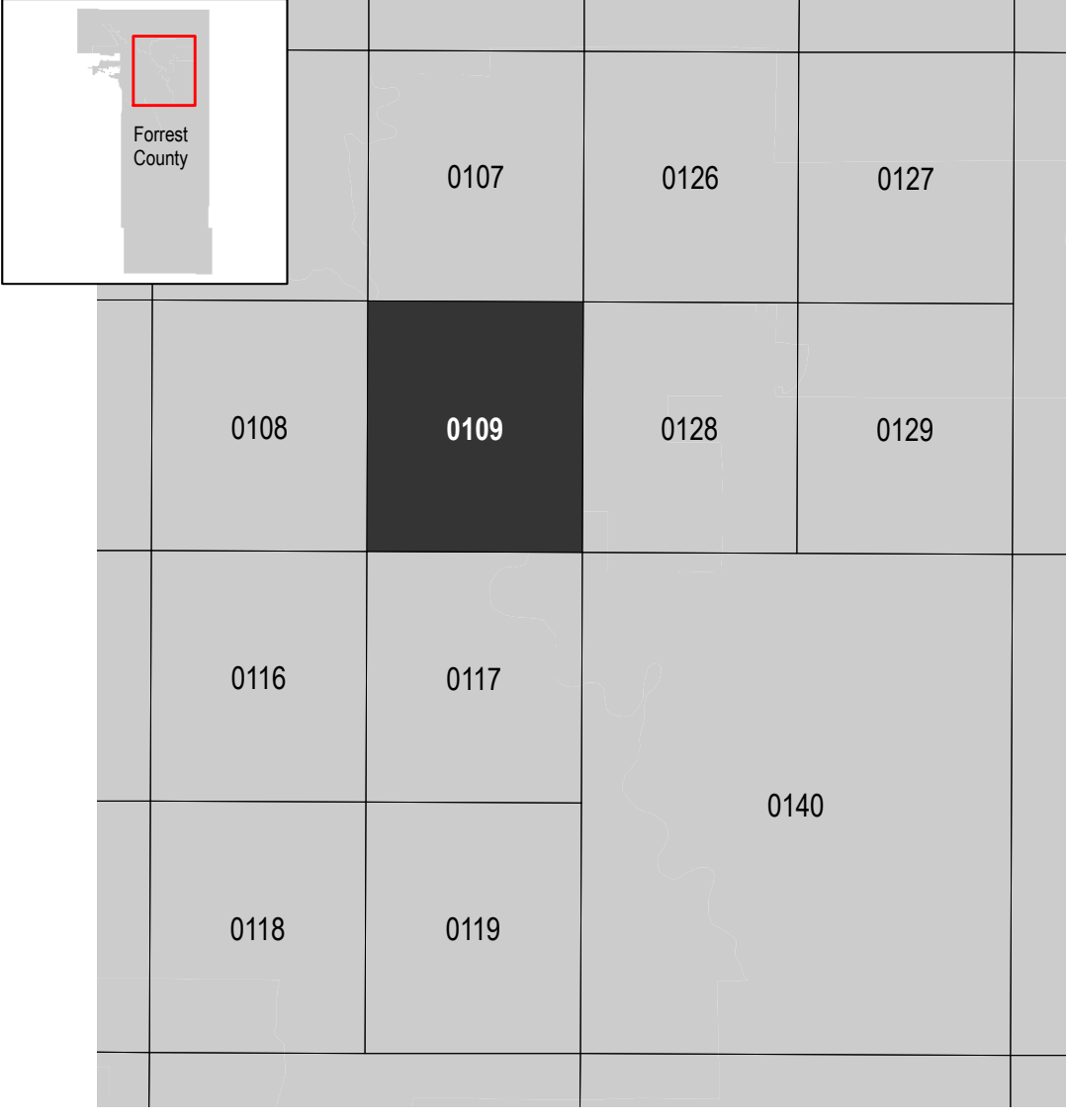
Base map information shown on this FIRM was provided in digital format by the Federal Geographic Data Committee, Mississippi Automated Resource Information System, Mississippi Department of Transportation, National Resources Conservation Service State Offices, State of Mississippi, U.S. Census Bureau, USDA Forest Service, U.S. Environmental Protection Agency, and the U.S. Geological Survey. Ortho Imagery was produced by the National Agriculture Imagery Program in 2016 and has a 1 - foot ground sample distance.

This map was produced through the Mississippi Risk Map Program, a cooperative partnership between the State of Mississippi and the Department of Homeland Security, Federal Emergency Management Agency.

SCALE



PANEL LOCATOR



National Flood Insurance Program

**NATIONAL FLOOD INSURANCE PROGRAM**  
FLOOD INSURANCE RATE MAP

**FORREST COUNTY, MISSISSIPPI**  
and Incorporated Areas

PANEL 109 OF 300

Panel Contains:

COMMUNITY	NUMBER	PANEL	SUFFIX
FORREST COUNTY	280052	0109	F
HATTIESBURG, CITY OF	280053	0109	F
PETAL, CITY OF	280260	0109	F

**PRELIMINARY**  
6/28/2019

VERSION NUMBER  
2.5.3.6

MAP NUMBER  
28035C0109F

MAP REVISED