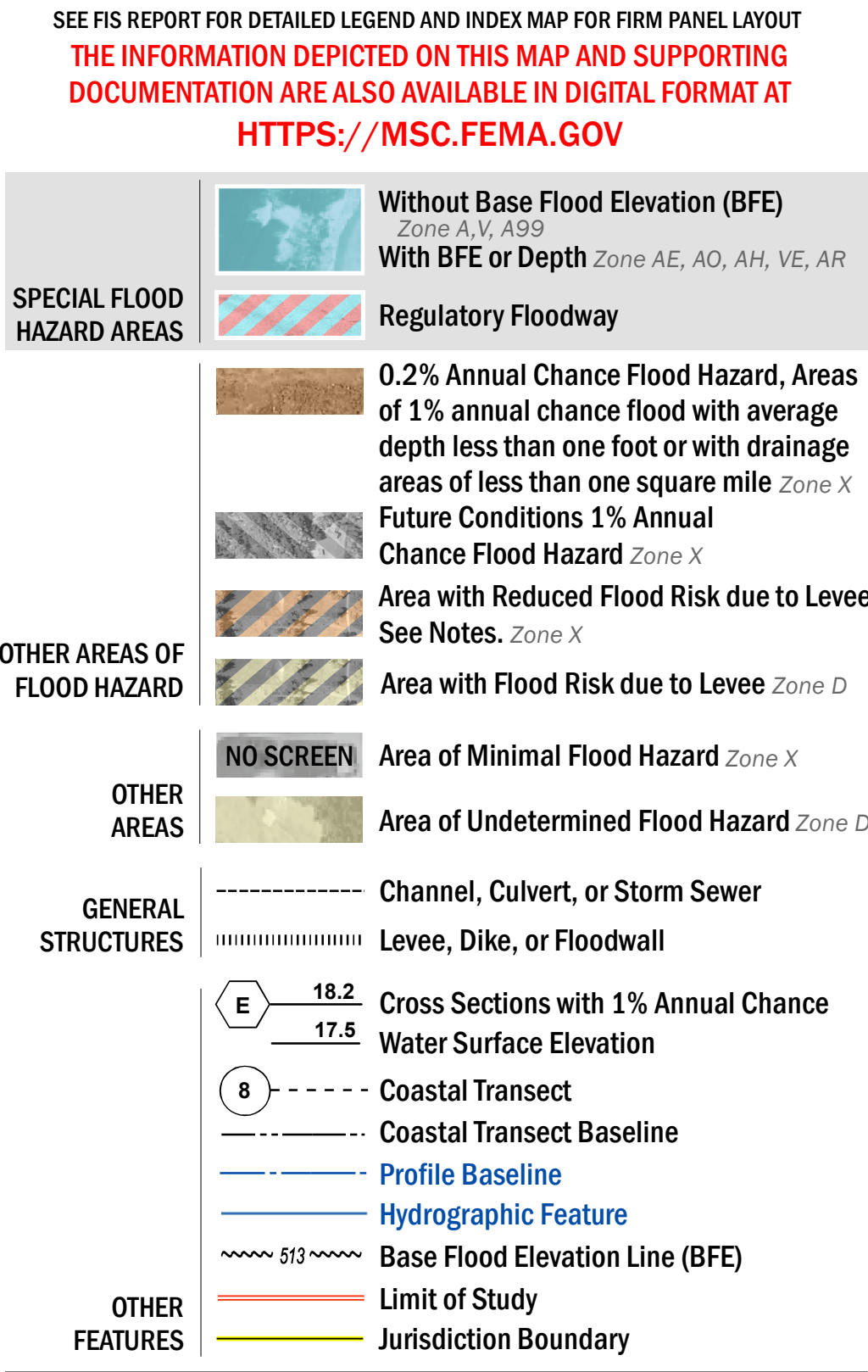


FLOOD HAZARD INFORMATION



NOTES TO USERS

For information and questions about this map, available products associated with this FIRM including historic versions of this FIRM, how to order products or the National Flood Insurance Program in general, please call the FEMA Map Information eXchange at 1-877-FEMA-MAP (1-877-336-2627) or visit the FEMA Map Service Center website at <https://msc.fema.gov>. Available products may include previously issued Letters of Map Change, a Flood Insurance Study Report, and/or digital versions of this map. Many of these products can be ordered or obtained directly from the website. Users may determine the current map date for each FIRM panel by visiting the FEMA Map Service Center website or by calling the FEMA Map Information eXchange.

Communities annexing land on adjacent FIRM panels must obtain a current copy of the adjacent panel as well as the current FIRM Index. These may be ordered directly from the Map Service Center at the number listed above.

For community and countywide map dates refer to the Flood Insurance Study report for this jurisdiction.

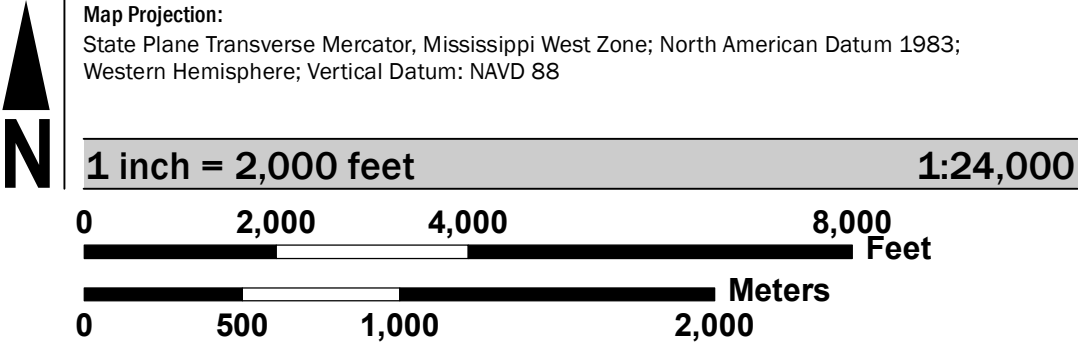
To determine if flood insurance is available in this community, contact your Insurance agent or call the National Flood Insurance Program at 1-800-638-6620.

Base map information shown on this FIRM was provided in digital format by Mississippi Department of Environmental Quality, Mississippi Automated Resource Information System, and the United States Census Bureau. Ortho imagery was produced by Sanborn Mapping Company in 2013 that has a 1 - foot ground sample distance, and Surdex Corporation in 2014, 2016, 2017 that has a 1 - foot ground sample distance.

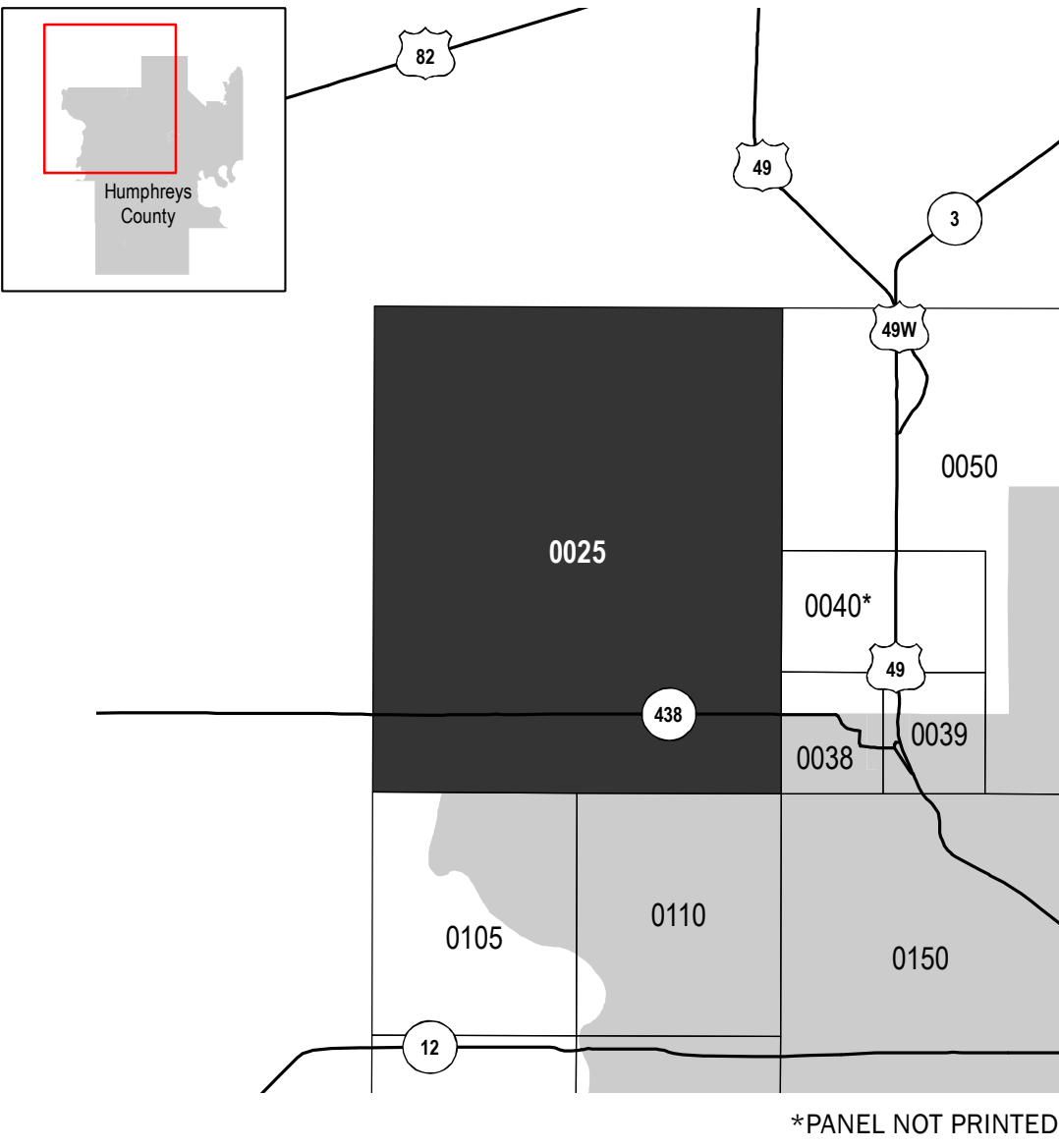
**ACCREDITED LEVEE:** Check with your local community to obtain more information, such as the estimated level of protection provided (which may exceed the 1-percent-annual-chance level) and Emergency Action Plan, on the levee system(s) shown as providing protection for areas on this panel. To mitigate flood risk in residual risk areas, property owners and residents are encouraged to consider flood insurance and floodproofing or other protective measures. For more information on flood insurance, interested parties should visit <https://www.fema.gov/national-flood-insurance-program>.

This map was produced through the Mississippi Risk MAP Program, a cooperative partnership between the State of Mississippi and the Department of Homeland Security-Federal Emergency Management Agency.

SCALE



PANEL LOCATOR



**FEMA**

**National Flood Insurance Program**

**NATIONAL FLOOD INSURANCE PROGRAM**

**FLOOD INSURANCE RATE MAP**

**HUMPHREYS COUNTY, MISSISSIPPI**

and Incorporated Areas

PANEL 25 OF 375

Panel Contains:  
COMMUNITY HUMPHREYS COUNTY

NUMBER 280192

PANEL 0025

SUFFIX E

**PRELIMINARY**

**11/14/2018**

VERSION NUMBER 2.3.3.3

MAP NUMBER 28053C0025E

MAP REVISED