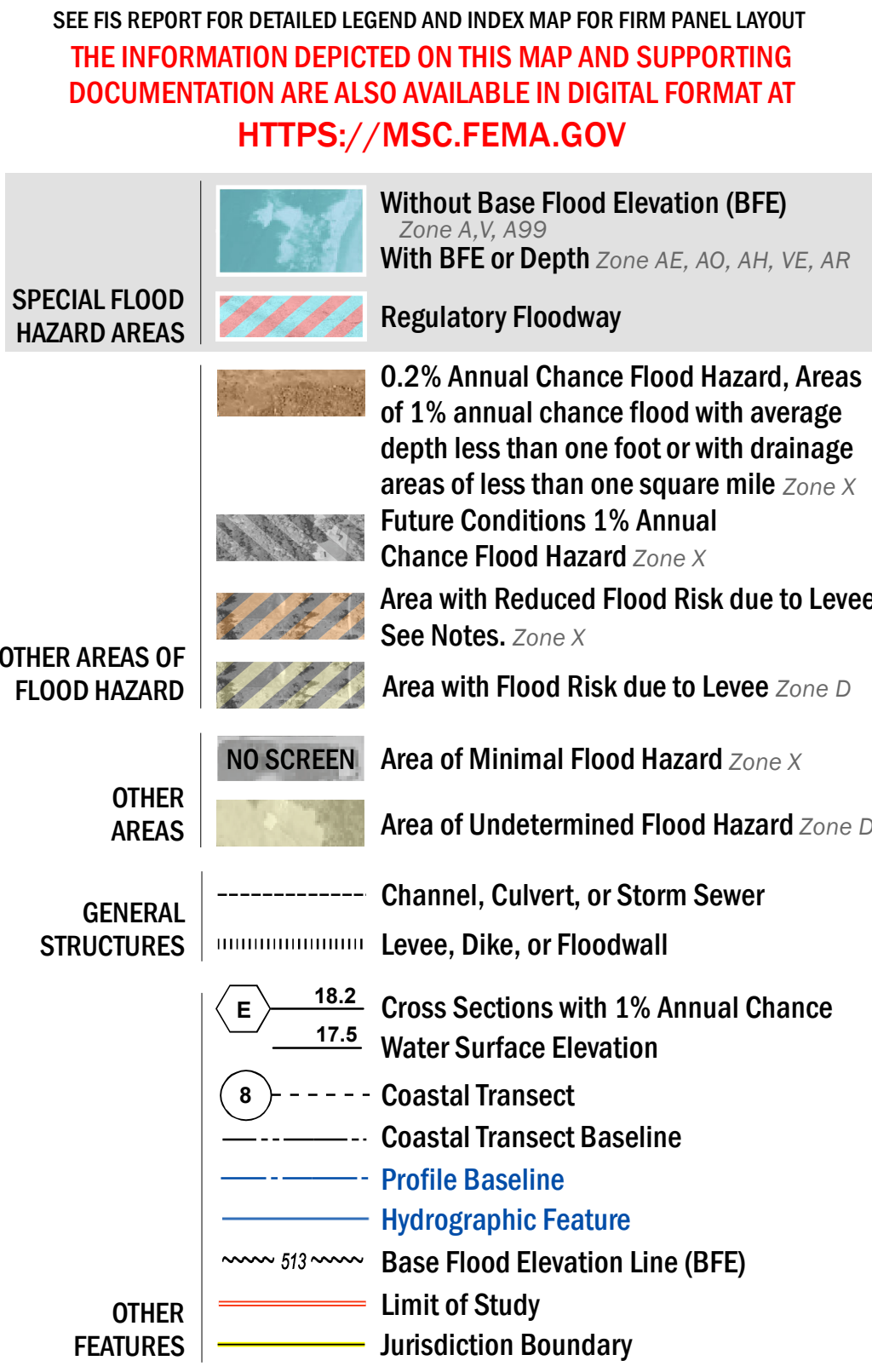


FLOOD HAZARD INFORMATION



NOTES TO USERS

For information and questions about this Flood Insurance Rate Map (FIRM), available products associated with this FIRM, including historic versions, the current map date for each FIRM panel, how to order products, or the National Flood Insurance Program (NFIP) in general, please call the FEMA Map Information exchange at 1-877-FEMA-MAP (1-877-336-2627) or visit the FEMA Flood Map Service Center website at <https://msc.fema.gov>. Available products may include previously issued Letters of Map Change, a Flood Insurance Study Report, and/or digital versions of this map. Many of these products can be ordered or obtained directly from the website.

Communities annexing land on adjacent FIRM panels must obtain a current copy of the adjacent panel as well as the current FIRM Index. These may be ordered directly from the Flood Map Service Center at the number listed above.

For community and countywide map dates refer to the Flood Insurance Study Report for this jurisdiction.

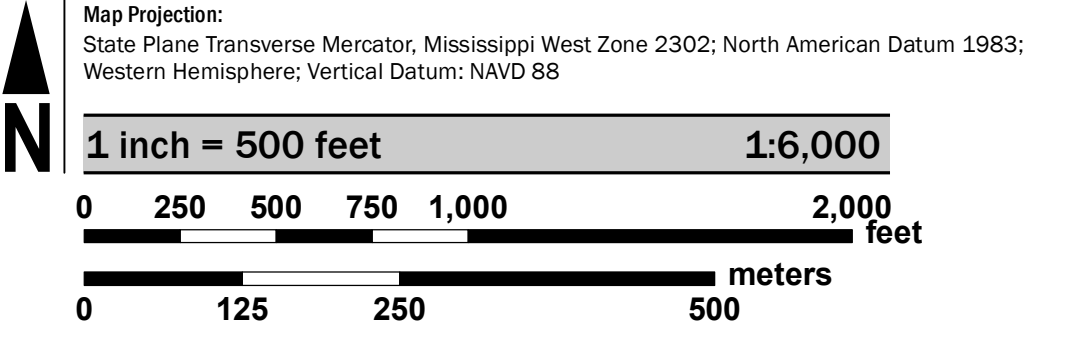
To determine if flood insurance is available in this community, contact your insurance agent or call the National Flood Insurance Program at 1-800-638-6620.

Base map information shown on this FIRM was provided in digital format by United States Geological Survey, Mississippi Automated Resource Information System, and the Rankin County GIS Department. Ortho imagery was produced by the United States Department of Agriculture National Agriculture Imagery Program in 2016 and has a 1-meter ground sample distance.

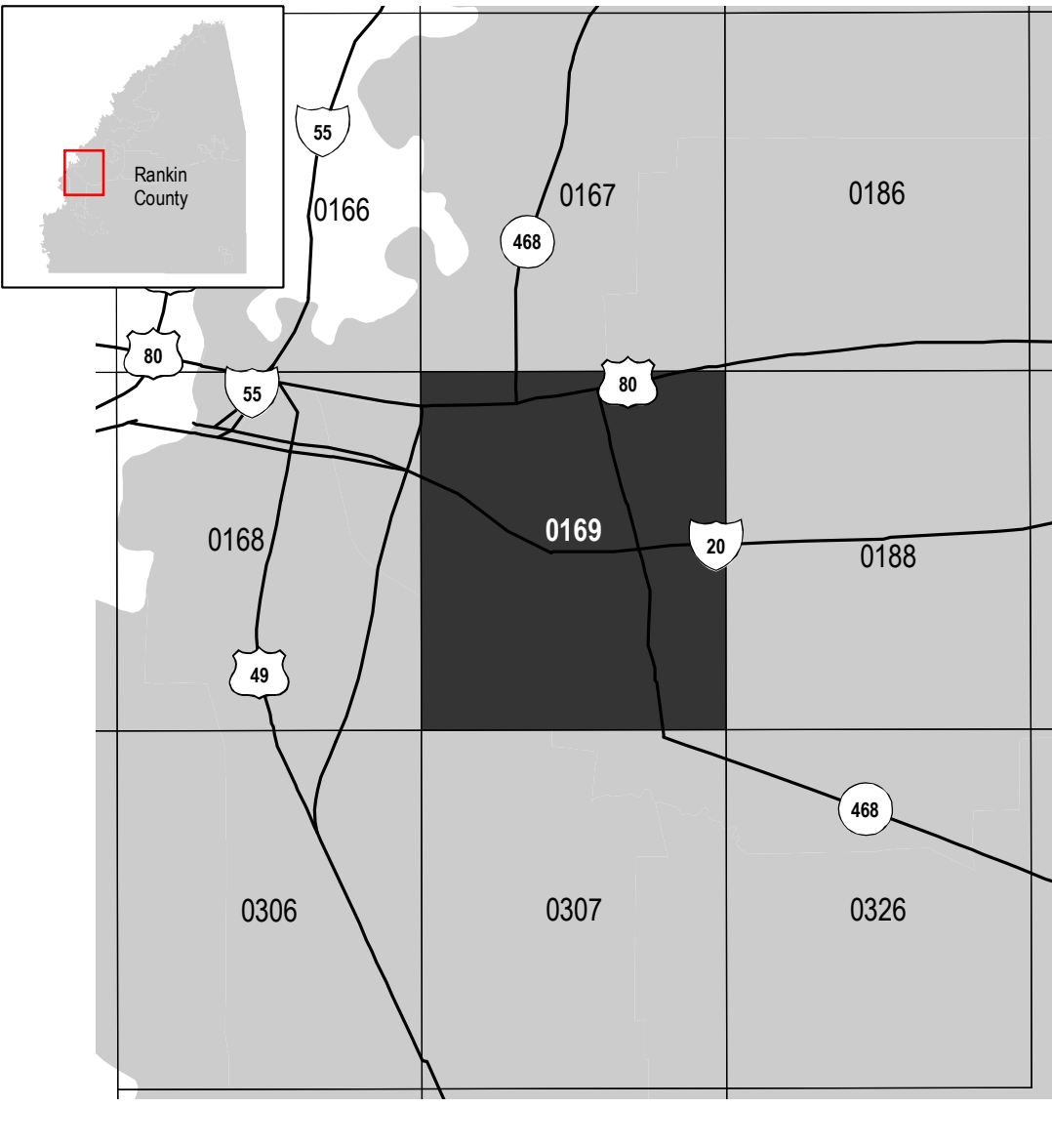
ACCREDITED LEVEE: Check with your local community to obtain more information, such as the estimated level of protection provided (which may exceed the 1-percent-annual-chance level) and Emergency Action Plan, on the levee system(s) shown as providing protection for areas on this panel. To mitigate flood risk in residual risk areas, property owners and residents are encouraged to consider flood insurance and floodproofing or other protective measures. For more information on flood insurance, interested parties should visit <https://www.fema.gov/national-flood-insurance-program>.

This map was produced through the Mississippi Risk Map Program, a cooperative partnership between the State of Mississippi and the Department of Homeland Security-Federal Emergency Management Agency.

SCALE



PANEL LOCATOR



NATIONAL FLOOD INSURANCE PROGRAM
FLOOD INSURANCE RATE MAP
RANKIN COUNTY,
MISSISSIPPI
and Incorporated Areas
PANEL 169 OF 540

Panel Contains:
COMMUNITY
FLOWOOD, CITY OF
PEARL, CITY OF
RIDLAND, CITY OF

NUMBER	PANEL	SUFFIX
280289	0169	G
280145	0169	G
280299	0169	G

PRELIMINARY
4/28/2020

VERSION NUMBER
2.5.3.6
MAP NUMBER
28121C0169G
MAP REVISED